

Silk Street Building Access Guide

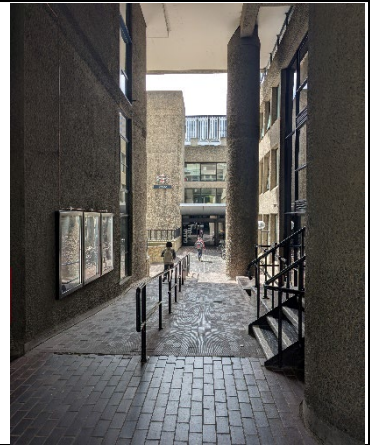
How to get around our iconic brutalist building.

Access into building

Access into Silk Street building is step free on street level.

Parking for one vehicle is available directly outside the Silk Street building and must be booked via the Estates & Facilities team.

Parking is also available in the Barbican Car Parks and is step free from Car Park 3 to GSMD Silk Street entrance.



Available lifts

A passenger lift is available to access all levels, located in the Northeastern corner of Silk Street reception. Card access is required to operate the lift due to security reasons. If use of the lift is required, a member of staff will be on hand to assist.

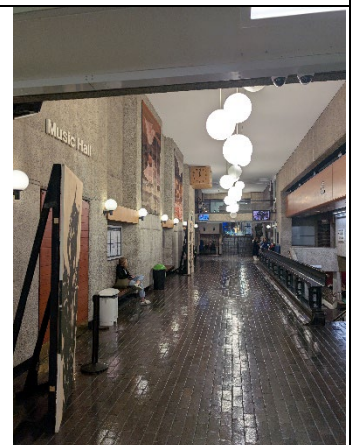
An accessible lift is available on the lower ground level to provide access to the lower levels of the Theatre and Theatre Workshop areas.



Step free access areas

Front of house reception, foyer and the lakeside terrace can all be accessed without the use of stairs; however, the passenger lift as previously mentioned and the lakeside terrace require keycard access. This can be granted by a member of staff if required. This is due to security and safety reasons, relating to our students.

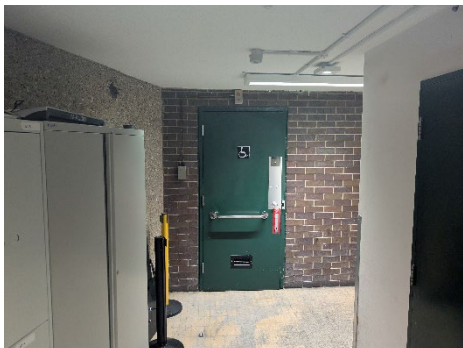
In addition, the café can be accessed using a combination of the main passenger lift, and the lower ground stairlift.



Accessible toilets

There is an accessible toilet located on the Lower Ground level, in the lift lobby. There is also step free access via this route to the public toilets adjacent to the café.

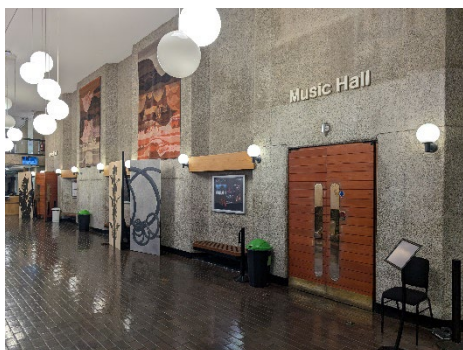
Radar keys are not required for our accessible toilets to ensure they are available for all who need them.



Hall access

The hall is completely accessible from the front of house foyer; this includes back of house areas. There is no access onto the raised staging for performers, but stage area can be extended onto the flat to allow accessible space.

Seating bank can be retracted to provide an entirely flat space if required.

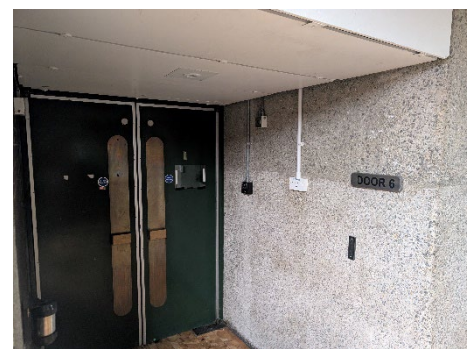
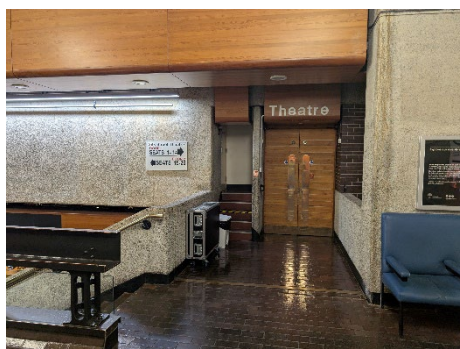
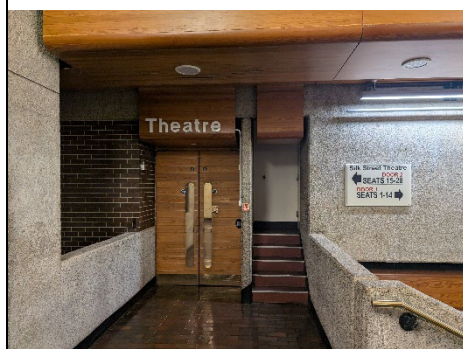


Theatre access

Theatre access varies depending on the seating arrangement inside.

If the main seating bank is in, the Theatre can be accessed via the main doors on ground level.

If access to the performance is via the Lower Ground entrance doors, access is via the main passenger lift and the additional lower ground stairlift, located by the café.

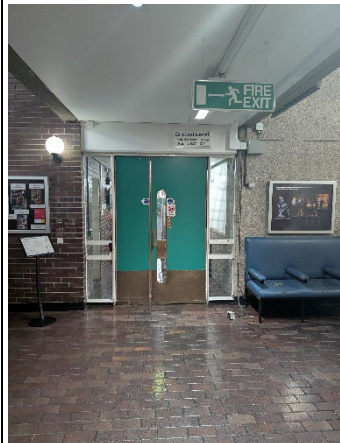


LRR Access

The LRR can be accessed step free via Level G Foyer.

Accessible seating space is available at the rear of the seating bank.

Access to the stage area is limited due to stairs from Lower Ground level.



Additional provision for visually impaired visitors

All front of house stairs have been marked with hi-vis edging to improve visibility.

Front of house staff have undertaken specific access training on how to best aid those with visual impairments.

Signage can be printed in large print to aid those with visual impairments.

Refuge areas are available in the event of an evacuation.

Additional provision for hearing impaired visitors

For both Music Hall and Theatre performances, we have hearing loop devices that can be requested by individuals who require them.

Front of House staff will set these up upon request and be on hand to aid with any technical issues.

Accessible evacuation routes

Our evacuation assembly point is located on the Lakeside Terrace at the rear of the school building.

Step-free evacuation routes are available for both main venues when the main seating banks are in.

For the theatre, when using the lower ground doors, additional provisions are in place including refuge areas and evacuation chairs.

Contact details

For any access questions, please contact the Estates & Facilities team via: Operationsmanagers@gsmd.ac.uk

Alternatively, please call: [020 7628 2571](tel:02076282571) and request the Operations Managers.