

**Prospectus 2027**



**GUILD  
HALL**  
SCHOOL



---

# This is where passion meets purpose.

**At Guildhall, voices come together from every corner of the world to perform, to connect, to challenge, and to change the way we see our world.**

Here you'll find more than world-class training – you'll find a home. A place where your story matters and where your artistry can fly.

We don't just shape outstanding performers, we cultivate cultural leaders and fearless storytellers: artists who are driven to create something true – something that moves hearts and shapes minds.

Set in the heart of London, we are a powerhouse of invention and collaboration. If you believe in the human potential of art – to inspire, to heal, to spark change – then you belong here.

**Professor Jonathan Vaughan**  
FGS DipRCM (Perf) DipRCM (Teach)  
Principal

Find out more  
[gsmd.ac.uk](https://www.gsmd.ac.uk)



---

**This is Guildhall**

---

04

**Your next step**

---

18

**Drama**

---

20

**Music**

---

28

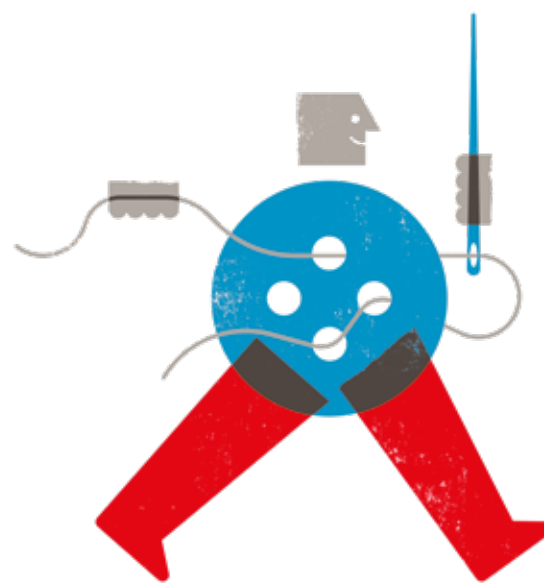
**Production & Design**

---

66

**Research & Teaching**

82



# This is Guildhall

As one of the world's leading conservatoires, our dynamic teaching empowers you to explore your passions, ignite your creativity and push artistic boundaries. Guided by internationally recognised artists and practitioners, you'll forge your own path and reach the highest standards in your craft.

Your journey starts here.

---

## Professional productions in exceptional spaces

Train, perform and create in some of London's most exciting venues, from our state-of-the-art concert halls to world-renowned stages across the city – and beyond. Be part of world-class music festivals – from chamber music to jazz. Craft immersive performances with the latest digital technology. Perform to a packed house in our three professional-quality theatres. Learning happens in real-world settings, as part of our international creative community.

---

## Learn from the best

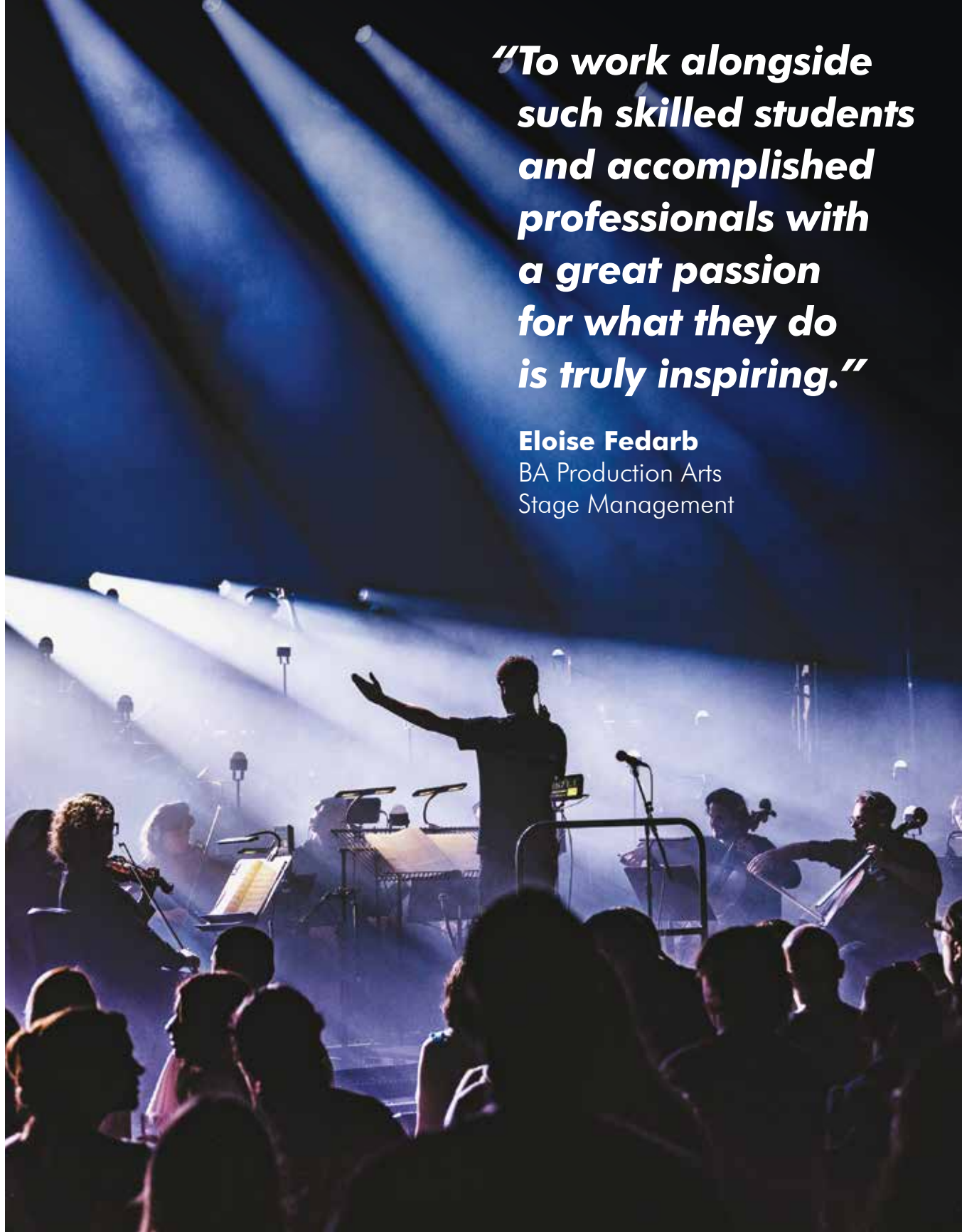
At Guildhall, you'll learn from – and work with – internationally acclaimed artists, directors, conductors and coaches. Our teaching staff bring a wealth of experience from the creative industries, while close connections with

leading companies across the performing and production arts offer exceptional career paths, as well as opportunities to learn and collaborate throughout your training. With significant in-person and individual teaching time, and hands-on guidance, you'll be mentored by our industries' best.

---

## Be part of our ensemble

We offer a collaborative, interdisciplinary environment, where creativity can flourish and experimentation is encouraged. From playing in the Guildhall Symphony Orchestra and forming your own chamber groups, to actors, production artists and designers working together to stage professional quality performances, at Guildhall, we believe that becoming part of an ensemble will help you find yourself as an artist.



**“To work alongside such skilled students and accomplished professionals with a great passion for what they do is truly inspiring.”**

**Eloise Fedarb**  
BA Production Arts  
Stage Management

**TOP 3**

for Performing Arts  
and top 4 for Music in  
the *QS World University  
Rankings 2026*

# Create your story

**At Guildhall, there's no single path to follow. You'll have the space to find out what drives you, take risks and create a way of working that feels right for you.**

---

## Build your course

You'll discover opportunities to create original work and tailor your training.

- Production & Design students can explore pathways beyond their specialism at undergraduate level.
- Music students can choose electives alongside their principal study to build a bespoke course.
- Acting students develop skills across stage, screen and self-led practice.

Our Making It programme offers funding to current students and recent graduates to expand and elevate their creative practice, and the annual *Making It Festival* is an eclectic showcase of new work by our student community.

---

## Tradition and innovation

From immersive opera to cutting-edge digital production, Guildhall students are at the forefront of change in the creative industries. Recently, students and alumni have worked with our in-house

production company, Guildhall Production Studio, to host designer Patrick McDowell's London Fashion Week shows. Film Music students were mentored by Academy Award-winning composer Rachel Portman and had their compositions recorded by the London Symphony Orchestra. Acting students became video game characters – recording voiceovers and motion capture in our TV studio.

---

## Shape your future

Guildhall alumni shape the creative industries worldwide. From household names on stage and screen to award-winning composers, directors and designers, our graduates lead, innovate and inspire. Others are making an impact in education, social change and business, using the transferable skills they learned here.

Where will Guildhall take you?

That's up to you.



***“At Guildhall, I know that I am getting an educational experience that isn't only guiding me to my greatest potential but treating me as a professional practitioner from day one.”***

**Jaz Armstrong-House**  
BA Performance Design

1st

among music conservatoires for research in the latest Research Excellence Framework

# Find your community

**When you join Guildhall, you become part of a warm, supportive and creative community. We're committed to equality of opportunity, celebrating diversity, and creating a space where everyone feels welcomed and supported.**

---

## Student Services

Our dedicated Student Services team is here to support you, offering practical assistance, academic and financial guidance, and support for your health and wellbeing. Students can access free, in-house counselling and physiotherapy, and advice services.

---

## International students

With students from over 50 countries, Guildhall is a global institution. We help international students to settle in with a buddy scheme, orientation sessions and visa and accommodation guidance.

---

## Students' Union

The Students' Union represents the student body, ensuring your voice is heard. It provides guidance on life at Guildhall, and runs clubs, societies, social events and performances, including at The

Basement Bar in Sundial Court, our halls of residence.

---

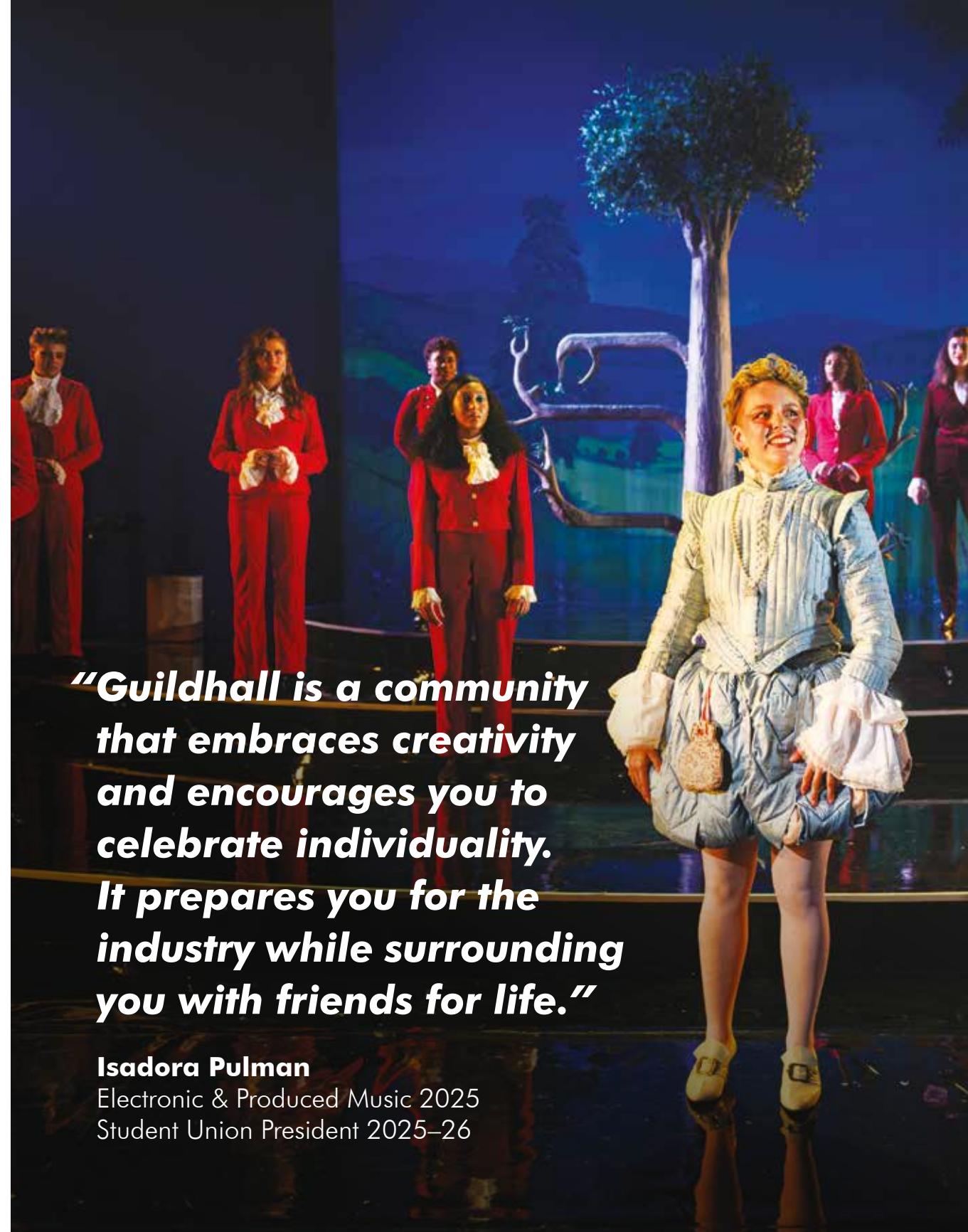
## Diversity, equity and inclusion

We are committed to fostering a community that is inclusive, equitable and respectful, working to create an environment free from discrimination. Our DEI team is here to support you through one-to-one advice, safe-space conversations, awareness-raising, and events that recognise the many perspectives, identities and experiences that make Guildhall unique.

---

## Disability and neurodiversity support

We welcome applications from disabled and neurodiverse students, and are committed to removing barriers. Our specialist team offers tailored support, working with students individually – from application and financial guidance to adjustments that ease the transition into School life.



***“Guildhall is a community that embraces creativity and encourages you to celebrate individuality. It prepares you for the industry while surrounding you with friends for life.”***

**Isadora Pulman**

Electronic & Produced Music 2025  
Student Union President 2025–26

2nd

for Performing Arts  
in the Complete  
University Guide 2027

# Explore your space

**Guildhall is a creative hub – where students live, work and play in a collaborative environment, with exceptional facilities. In the heart of London, you'll find inspiration all around you, behind our doors and around the city.**

---

## Space to explore

Guildhall School is located in a creative quarter in the heart of London, next to the Barbican Centre and close to the new London Museum.

You'll be surrounded by world-class performance and exhibition venues, with Shoreditch and Brick Lane's independent shops, bars and cafés just minutes away.

See live music every night, from grassroots gigs to global stars. Visit the West End's theatres or cross the River Thames to explore the Tate Modern, National Theatre and Royal Festival Hall.

As a student, you'll get discounts on entertainment, transport and more - everything London has to offer is within easy reach.

---

## Space to live

London offers a wide range of accommodation options to students, catering for different budgets and lifestyles, and the

School has excellent transport links to areas outside of the city's centre.

Students are supported in their search for somewhere to live, and flatmates to share with, through advice and events from Student Services. The School also has its halls of residence, Sundial Court, located around the corner from our main buildings. Full-time students can apply to live here.

Sundial Court has 173 bedrooms in flats for between three to six students. Facilities include a launderette, TV room and practice rooms onsite, and Music students can practise in their bedrooms during agreed hours. Security is provided 24 hours a day, and a team of Residential Assistants live in the building to provide peer support.

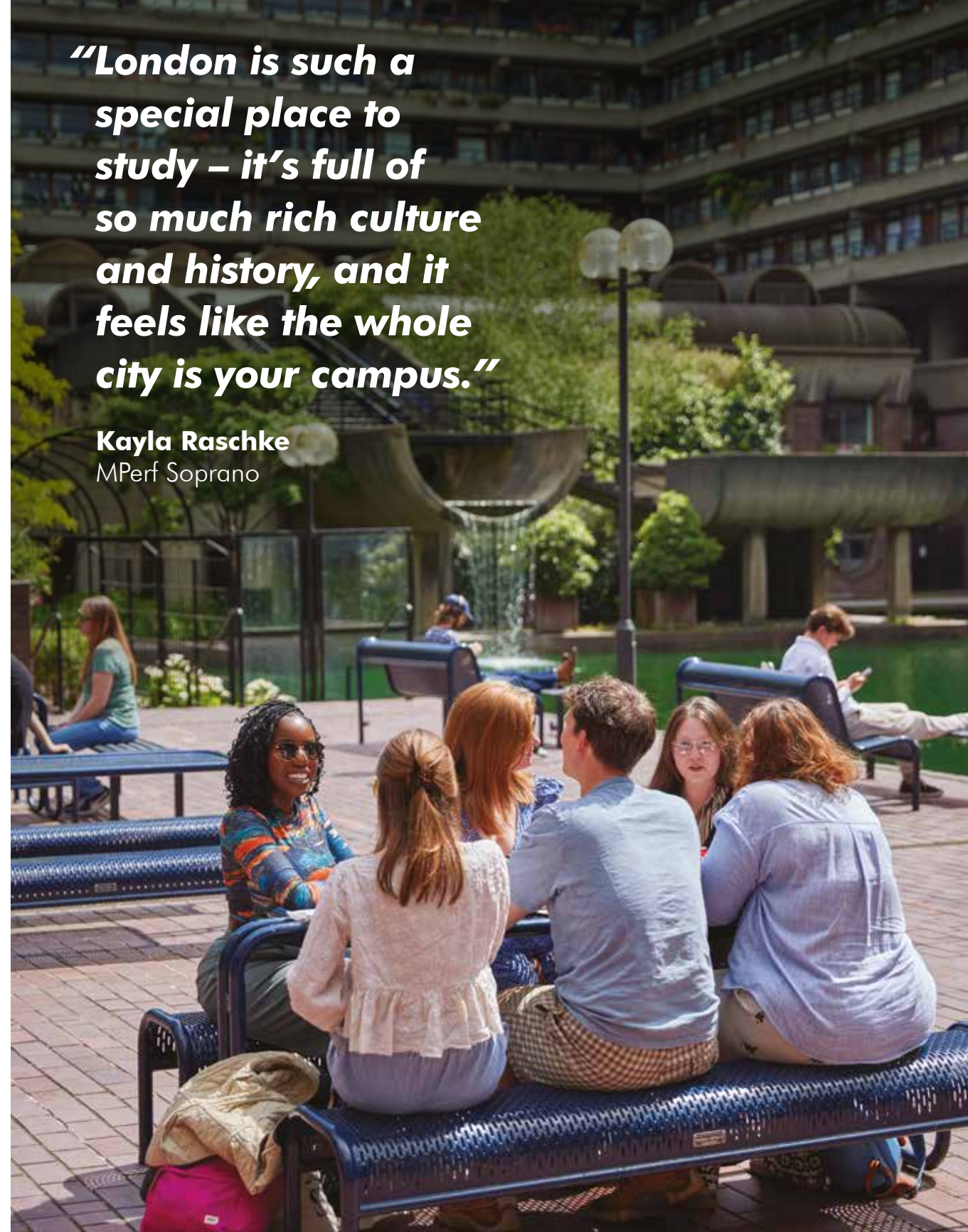
---

## Space to socialise

Our spaces for relaxation include two student common rooms, two cafés, a peaceful lakeside terrace and the popular Basement Bar in Sundial Court.

*“London is such a special place to study – it’s full of so much rich culture and history, and it feels like the whole city is your campus.”*

**Kayla Raschke**  
MPerf Soprano



**1st**

London was ranked first in Time Out's Best Cities for Culture 2026

# Own your stage

From our iconic Silk Street building to Milton Court's world-class concert hall and theatres, you'll rehearse and perform in some of London's finest venues.

## Space to learn

Our Grade II listed Silk Street building forms part of the Barbican's icon of Brutalist architecture, while over the road, Milton Court opened in 2013 as part of a £90 million development, expanding our world-class facilities.

Across both sites, we are home to five public performance venues, each with exceptional acoustic properties, extensive seating capacity and the latest performance technology. You'll also find more than 100 specialist studios, labs, workshops and practice rooms.

Our library has one of the most extensive collections of music and drama resources in Europe, with specialist staff to support your research.

## Space to innovate

At Guildhall, we use technology to enhance artistry. Our automated flying system supports technical training for stage productions. We have cutting-edge facilities for audio and video production, including an industry-standard recording studio and dedicated Electronic and Produced Music studios.

Our TV studio, with green screen, enables media production and experimentation. The School is also at the forefront of research into new technologies such as extended reality (XR). And Guildhall Stream is our video platform for recorded performances, ensuring your work is seen far beyond our walls.

**Gold**

in the latest Teaching  
Excellence Framework



***“Guildhall’s world-class facilities have played a huge role in my development, allowing me to train to a professional standard and build confidence with industry-leading equipment.”***

**James Levy**  
BA Production Arts  
Theatre Technology

# Build your career

**Whatever your creative ambitions, your training at Guildhall is carefully crafted to ensure you enter professional life with confidence.**

Career development is woven into every undergraduate programme, while masterclasses and workshops led by industry leaders will give you first-hand insight into the realities of the creative world. Collaborating across disciplines and partnering with world-class organisations, you'll refine your craft, perform in exceptional venues, and graduate with the skills, experience and connections to take your next step.

***“Guildhall’s ethos made me realise how much I could achieve creatively and gave me the confidence to make my own opportunities in my career.”***

**Ruby Thompson** Acting 2024

# 95%

of surveyed Guildhall students who graduated in 2022/23 were in work or further study 15 months later



---

# Grow your network

**Our industry connections bring the professional world into your training, introducing you to leading artists, directors and creative companies. And graduating from Guildhall is just the beginning: you'll join a supportive global network of alumni who are shaping the creative industries and beyond.**

---

## Step into the spotlight

Our Acting students are supported by our in-house careers consultant, while each final-year student is mentored by professional actors. They benefit from industry showcases and opportunities to meet agents, casting directors and industry professionals. Practical preparation is built in, with training on essential topics such as tax, unions and accounting to help students navigate the business side of a creative career.

---

## Get to work

Students in our Production & Design department gain vital experience of working on live projects. In the past, this has ranged from creating lighting design ideas for singer-songwriter Mitski's world tour to taking part in research and development work with Upswing, a leading contemporary circus company that uses circus shows and projects

to explore the stories that connect us as communities.

As part of the BA (Hons) in Production Arts, students take on professional placements and have worked with organisations including the National Theatre, Clod Ensemble, Royal Ballet and Opera, and The Shed in New York.

---

## Play with the best

Guildhall musicians perform alongside world-class artists on some of London's finest stages. Partnerships with leading orchestras and venues - including the Barbican, London Symphony Orchestra, BBC Symphony Orchestra, Academy of Ancient Music, and the Royal Ballet and Opera - offer students exceptional experience and the chance to learn directly from top professionals.

***“The ethos of Guildhall – grounded in artistic excellence, authenticity and growth – has helped me refine my skills while staying true to myself and my artistic identity.”***

**Karima El Demerdasch**  
Mezzo Soprano 2025



# Your next step

Applying to Guildhall School is simple – and we’re here to guide you at every stage. You’ll apply directly through our website, and your interview or audition will be tailored to your course. We are looking for talent, passion and potential: your creative ability matters more than your academic background. You’ll find full guidance online – including audition tips, deadlines, fee information and advice for international applicants.

## Fund your training

To help you access and thrive in your training, we provide a range of financial support and information. Our Senior Student Funding Officer can discuss your circumstances with you and direct you to potential sources of funding.

## Tuition fee loans

UK undergraduate students can apply for government funding.

## Scholarships

We have a wide range of scholarships that are awarded on the basis of talent and/or financial need.

## Bursaries and other support

We offer means-tested support with living costs, as well as advice on additional sources of funding.

## Access and participation

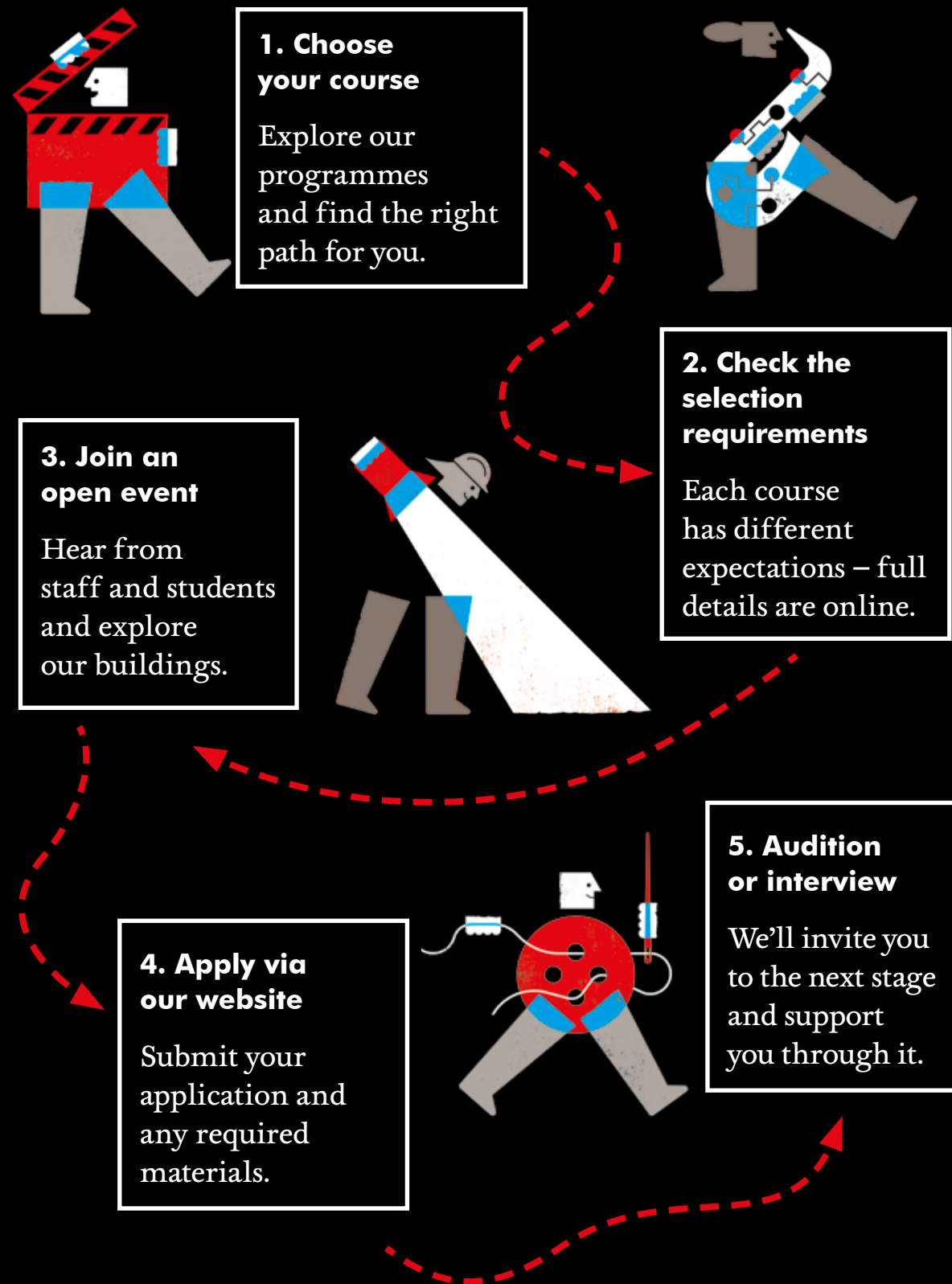
We offer free support to UK-based young people, applicants and students from backgrounds underrepresented in higher education, including subject-specific opportunities.

## Supported Application Scheme

Eligible students can receive a free application, workshops, support and audition travel bursaries. They may also be eligible for a Start-up Fund to help with equipment costs when enrolling at Guildhall.



Scan for more details.  
[gsm.d.ac.uk/apply](https://gsm.d.ac.uk/apply)

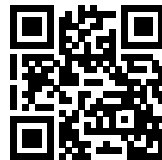


# Drama

*“Guildhall School’s Drama department has inclusive and progressive practice at its core. Our Acting programme is constantly evolving to meet the demands of the 21st century, while maintaining a deep commitment to craft training. We provide a rigorous, ensemble-based and industry-relevant teaching and learning experience, developing actors who are tenacious and versatile.”*

Professor Orla O’Loughlin BA MA PGCE  
Vice-Principal & Director of Drama

<b>Drama at Guildhall</b>	22
<b>Undergraduate programme</b>	24
<b>Acting alumni</b>	26



Scan for more details about studying drama at Guildhall and to discover our department staff.  
[gsmd.ac.uk/drama](https://gsmd.ac.uk/drama)



# Drama at Guildhall

**At Guildhall, we believe strongly in the power of the ensemble, with individual actors working together in a coordinated and complementary way, each contributing to an impactful shared outcome.**

We work in a collaborative atmosphere and encourage actors to connect with each other, society and the wider world. Our graduates are able to move with confidence between stage, screen, digital and audio platforms, and classical, contemporary and experimental repertoire.

---

## Train with expert practitioners

During the programme, you will work with a diverse range of teachers and guest practitioners, all with working knowledge of the industry, exploring a broad range of practices and repertoire. There is a generous staff-student ratio and a high number of teaching hours.

All practitioners bring their particular experience and practice to an integrated approach, working together as a committed team. We work with you as an individual, and in groups and productions, to help define, develop and articulate the practices that are most useful to you.

---

## Perform in industry-standard theatre spaces

Live productions take place in our three distinctive theatres, offering an exciting mix of

industry-standard performance spaces to explore: the large, versatile Silk Street Theatre; the proscenium arch Milton Court Theatre; and the intimate Milton Court Studio Theatre. In addition, we create productions made for digital platforms, screen and live-streaming.

---

## Collaborate across artistic disciplines

Interdisciplinary collaboration is central to our approach at Guildhall School. We believe that collaboration is fundamental to 21st century artist training, and students in the Drama department have regular opportunities to create work and share learning with their peers in Music and Production & Design. Through a range of regular initiatives, including Making It, the School's artist development



*“Guildhall rewrote everything that I thought I knew about acting and challenged me to take myself to levels I couldn’t have imagined.”*

**Aisha-Mae McCormick**  
Acting 2025

programme, students are encouraged and supported to create new collaborative performance projects with seed funding and free access to rehearsal and performance space.

---

## Add your own chapter to Guildhall’s alumni story

Guildhall Acting graduates can be seen in a wide variety of roles across film, TV and theatre. Many alumni go on to use their training in other fields such as education, social care, law and

design. The Drama department supports ongoing training by offering a range of alumni initiatives, such as the Alumni Gym, and a programme of responsive initiatives, such as play commissions, in association with the Innovation department.

## BA (Hons) in Acting

### Duration

Three years full-time

Innovative in structure and approach, our Acting programme will support you to deepen your connection to yourself and to expand into a dynamic approach to acting. At Guildhall School, we are committed to the development of each student's unique and individual practice.

During your first two years, you will concentrate on acquiring fundamental skills and experience. Your time will be divided between class and project work. In the first two terms, most of your time will be spent in classes, with more time on projects as the programme progresses. Both class and project work focus on developing and integrating our main areas of study:

- **Acting Practice:** You will explore some fundamental questions of, and approaches to, acting.
- **Voice:** Your work will focus on breath, sound and language, aiming to release the natural agility of your voice.
- **Movement:** You'll discover techniques and principles that yield connection, awareness and exploration through your body as an actor.
- **Screen:** You will learn the principles of screen and acting on camera.
- **Self-led Practice:** You will discover the skills required to build an autonomous, sustainable career as a creator of your own performance work.
- **Reflective/Reflexive Practice:** You will build self-awareness, resilience and critical understanding through a mindful process in which you can reflect on diverse histories, theories and discourses, helping to put yourself and your practice into a critical context e.g. feminism, colonialism, patriarchy, race.
- **Industry:** In your second year, you'll begin developing your instincts to enable you to manage your life as a working actor upon graduation.

By your third year, you will have developed your own working processes. Most of your time will be spent rehearsing and performing to the public and to industry professionals in productions and showcases. You will work on a variety of productions of differing scale, style and genre. You will also have the opportunity to write and perform your own work, and a variety of bespoke showcase opportunities.

In this final year, you will receive support and guidance on starting out in the industry, with regular talks and workshops by directors, agents, casting directors, tax advisers and trade union representatives. You will be mentored by actors currently working in the profession, and the programme provides a specialist industry consultant to assist you in the transition from training to professional life. Students who have the right to work in the UK are eligible for student membership of Equity and full membership of the trade union on completion of their studies.

### Applications

Students from a wide range of ages and backgrounds are selected by a process of audition and interview. There is no upper age limit, and previous acting experience is not required.

We receive an exceptionally high number of applications for our Acting programme and do not accept late applications. Apply early to make sure we receive your application by the deadline.

Please note, this programme is undergoing periodic review during the 2026/27 academic year and is therefore subject to change.



# Acting alumni



“Guildhall for me was a place of discovery and creativity within the art of acting. It’s the place where I found presence, acceptance and freedom.”

**Maisie Norma Seaton** 2023

Played Ellen Quinn in season eight of BBC Scotland’s *Shetland* and made her West End debut as Claudia Yount in *Stranger Things: The First Shadow*.

**Sheyi Cole**  
2021

Played Ralph in Chichester Festival Theatre’s *Lord of the Flies* and Jason in Netflix’s *The Beautiful Game*. Has also appeared in *Full Circle*, *Atlanta*, *Boxing Day* and Steve McQueen’s acclaimed *Small Axe* series.



**Damian Lewis OBE**  
1993

Won Primetime Emmy and Golden Globe awards for his portrayal of Nicholas Brody in *Homeland* and received nominations for his performance as Henry VIII in *Wolf Hall*. Also nominated for a Golden Globe for *Band of Brothers*.



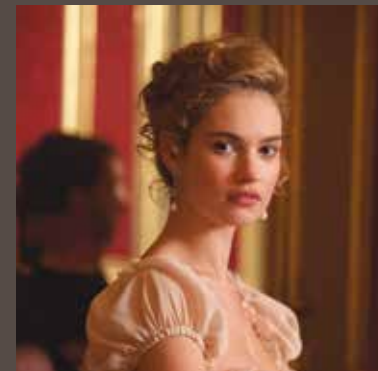
**Anya Chalotra**  
2017

Plays Yennefer of Vengerberg in the popular Netflix series *The Witcher* and also appeared in the stage adaptation of Pawel Pawlikowski’s Academy Award-nominated film *Cold War* at the Almeida Theatre.



**Lily James**  
2010

Played leading film roles in *Cinderella*, *Mamma Mia! Here We Go Again*, *Yesterday* and *The Darkest Hour*. Earned Primetime Emmy and Golden Globe nominations for *Pam & Tommy* and recently starred in Hulu’s *Swiped*.



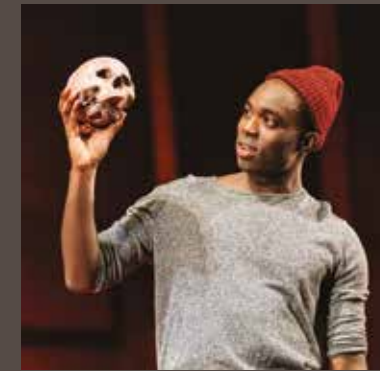
**Toheeb Jimoh**  
2018

Nominated for a Primetime Emmy for his role in Apple TV’s *Ted Lasso* and appeared in HBO’s *Industry* and Amazon Prime’s *The Power*. Won second prize at the Ian Charleson Awards for *Romeo and Juliet* at the Almeida Theatre.



**Paapa Essiedu**  
2012

Earned Primetime Emmy and BAFTA nominations for *I May Destroy You*, a BAFTA nomination for *The Lazarus Project*, and won an Olivier Award for *All My Sons*. Cast as Severus Snape in HBO’s *Harry Potter* series.



**Nikesh Patel**  
2010

Best known for roles as Aafrin Dalal in *Indian Summers* and Tom Kapoor in *Starstruck*. Has also appeared in *The Devil’s Hour* and *Picture This* on Amazon Prime, and *How to Get to Heaven from Belfast* on Netflix.



**Bella Maclean**  
2020

Played Taggie O’Hara in *Rivals* and has appeared in Netflix’s *Sex Education* and BBC’s *Silent Witness*. Has performed on stage in *Spring Awakening* at the Almeida Theatre and *London Tide* at the National Theatre.



**Michaela Coel**  
2012

Created and starred in *Cheating Gum*, winning a BAFTA Award, and *I May Destroy You*, winning a Primetime Emmy and BAFTA. Also won a Primetime Emmy for *Mr. & Mrs. Smith* and stars in *The Christophers*.



# Music

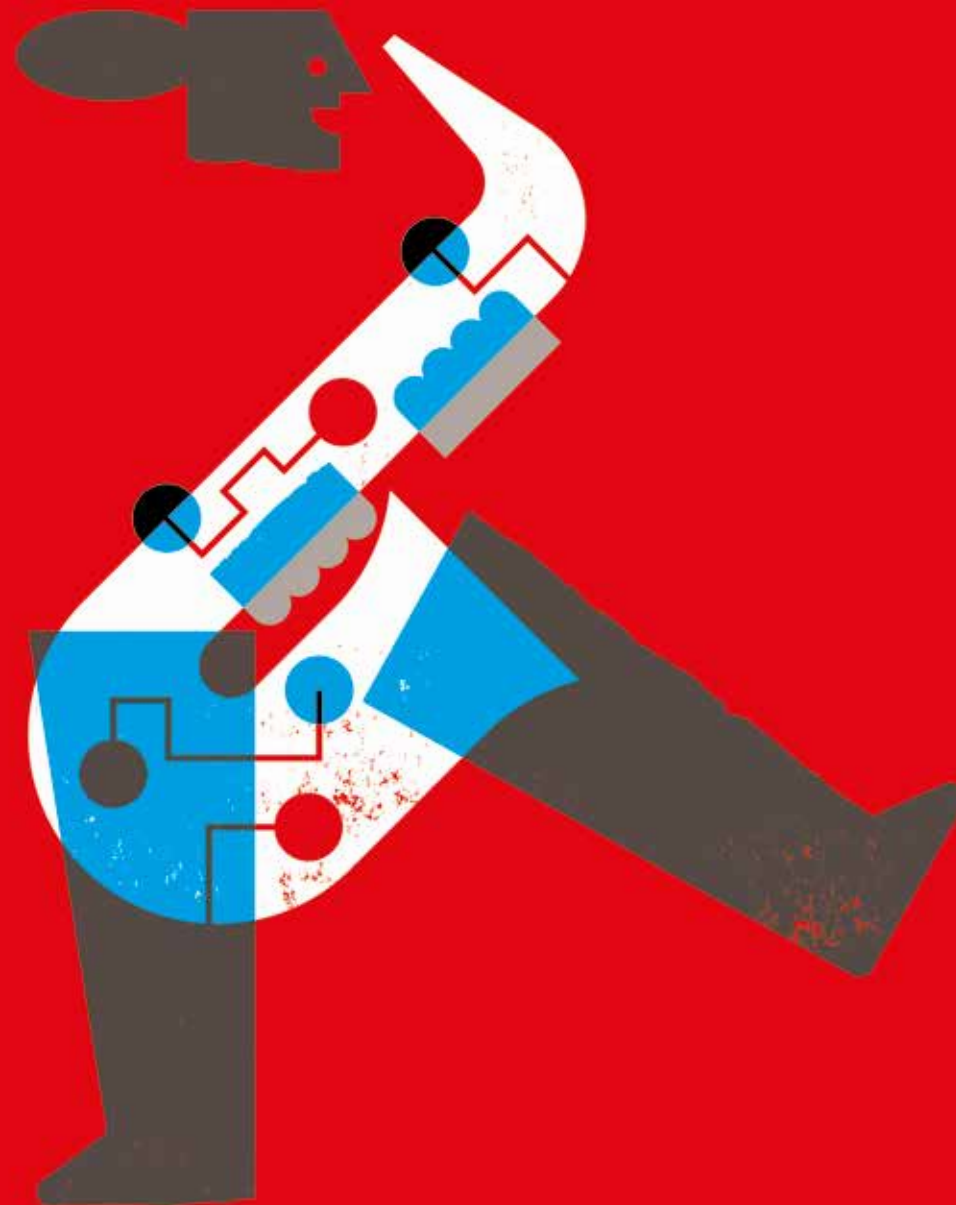
*“The transformational power of music is central to our teaching at Guildhall School. Through exceptional training, we inspire the extraordinary in musicians who want to make a difference in the world. Join us and unlock your full musical potential.”*

Armin Zanner FGS MA MPhil (Cantab) MMus SFHEA  
Vice-Principal & Director of Music

<b>Music at Guildhall</b>	30
<b>Undergraduate programme</b>	32
<b>Postgraduate programmes</b>	34
<b>Principal study departments</b>	38
<b>Music alumni</b>	64



Scan for more details about studying music at Guildhall and to discover our department staff.  
[gsmd.ac.uk/music](https://gsmd.ac.uk/music)



# Music at Guildhall

**When you study music at Guildhall, there are two central principles that will be fundamental to your training.**

*Inspiring the extraordinary in everything you do:* achieving your potential as an outstanding music maker, whatever your field of expertise.

*Evolving as an artist in society:* becoming an artist who is curious and whose work is vibrant and relevant to 21st-century life. With an ever-growing awareness of your own creative values, you will harness your knowledge to define and build your own career and bring transformational change to others.

We offer a bespoke programme, designed to elevate each music student to their highest level. Come and join our musical community.



## Train with leading international artists

At the heart of your training will be intensive one-to-one lessons and small ensemble sessions with Guildhall's core staff of over 400 practitioner teachers. You will also work with some of the world's finest international visiting artists and ensembles. Guildhall frequently plays host to an array of guests, which have recently included Gianandrea Noseda, Patricia Kopatchinskaja, Billy Childs, Helen Sung, Julia Bullock, Lise Davidsen, Mad Professor (aka Neil Fraser), Rachel Portman, the Los Angeles Philharmonic and the Colin Currie Group.

## Perform all over London

Each year, Guildhall presents over 250 public performances of student concerts, opera and recitals in our state-of-the-art performance spaces. Students also perform across London, recently in venues such as the 2000-seat Barbican Hall, LSO St Luke's, Wigmore Hall, the capital's renowned jazz clubs, and further afield in New York's Carnegie Hall. You will have the chance to enter competitions, including the prestigious Gold Medal, with previous winners including Jacqueline du Pré OBE, Tasmin Little CBE and Sir Bryn Terfel.

## Collaborate with industry leaders and peers

Our partnerships with the Barbican Centre, London Symphony Orchestra, BBC Symphony Orchestra, Royal Ballet and Opera, and Academy of Ancient Music, and collaborations with organisations including EFG London Jazz Festival, Roundhouse and (for Music Therapy students) National Health Service providers, ensure that you will establish experience within the industry before you graduate. You will have the opportunity to perform or create music with an array of Guildhall ensembles, from the Guildhall Symphony Orchestra, new music ensembles and Opera Orchestra, to wind and brass ensembles, Guildhall Big Band and Jazz Orchestra, and historical performance and chamber groups.

## Innovate and create exciting new work

New music, new directions and reaching new audiences are core to the creative curiosity that uniquely characterises Guildhall. You'll have many opportunities for innovation and experimentation during your studies here. New opera is created as part of the MA in Opera Making & Writing; classical, jazz and electronic music students work together; and students expand their musical horizons through participation in community ensembles, recently including *The Messengers* and the National Open Youth Orchestra London Ensemble. Beyond the curriculum, student-led projects flourish across Guildhall, from award-winning chamber music groups to experimental projects funded by our Making It artist development programme. If you want to change music, Guildhall is the place to start.

*“The bespoke training means your performance opportunities directly invigorate your individual artistic growth. Conversations with staff are open, meaning anything is possible.”*

**Will Jowett**  
MPerf Baritone/Bass

## Bachelor of Music (Hons)

### Duration

Four years full-time

The BMus programme is built around exceptional one-to-one tuition for performers, composers and electronic musicians, designed to develop your individual artistry and practical skills as a musician.

Your principal study will make up at least two-thirds of your training, with a minimum of 30 individual lessons a year with our renowned professorial staff. You'll also be supported by over 100 hours a year of departmental classes, workshops, coaching, collaborative projects and performance opportunities with high-profile artists.

Alongside your principal study, you'll take classes in musicianship, critical and analytical skills, and professional studies modules exploring areas such as performance psychology, wellbeing, improvisation and communication. You'll also have the opportunity to choose elective modules to tailor your training to your interests and aspirations.

*“Guildhall has helped me realise exactly what it is I want to do in the music industry and has given me the tools to have the career I want.”*

**Edouard Le Feuvre**

Jazz Bass 2025

**For more information  
about principal studies,  
see pages 38–63.**

### BMus Elective modules\*

- Advanced Brazilian Rhythm
- Advanced Ensemble
- Advanced Principal Study
- Artistry in Stylistic Composition
- Body Matters
- Brass and Wind Arranging
- Brazilian Rhythm (Year 2)
- Collaborative Skills (Year 2)
- Composition (Year 2)
- Composition for Media
- Compositional Structures, Communication and Expression (Year 2)
- Conducting
- Creative Writing for Musicians (Year 4)
- Electronic Music Composition & Production
- Electronic Music Workshop (Year 2)
- Historical Performance
- Interpretation through Improvisation
- Introduction to Music Therapy
- Jazz Arranging for Large Ensembles
- Jazz Performance
- Jazz Workshop (Year 2)
- Keyboard Musicianship (Year 2)
- Music History (Year 2)
- Music, Philosophy and the Arts
- Opera and Theatre (Year 4 singers)
- Piano Works (Year 4 pianists)
- Research Project (Year 4)
- Second Study
- Workshop Skills

\*Elective modules are subject to change



## Master of Music in Performance

**Duration**  
One year full-time or two years part-time<sup>\*\*</sup>

Preparing you for entry to the profession at the highest level, this programme develops you as an individual, insightful musician and practitioner. You will challenge yourself and take risks in your field of expertise, gaining the technical facility and musical flexibility to explore and refine your individual artistic voice.

<sup>\*\*</sup>Opera Studies is full-time only, and the MMus takes two years  
<sup>\*</sup>Orchestral Artistry is full-time only

## Master of Music in Composition

**Duration**  
One year full-time or two years part-time

Guildhall School offers some of the most stimulating and creative training for composers in the UK. Studying Composition at Master's level prepares you for professional life as a composer. You'll refine your individual artistic approach within the collaborative environment of a vibrant, contemporary conservatoire – working closely with performers, ensembles and other creators – while also having the space and support to reflect, experiment and grow as an artist.

## Master of Performance (Guildhall Artist)

**Duration**  
Two years full-time or two years part-time and one year full-time<sup>\*</sup>

## Master of Composition (Guildhall Artist)

**Duration**  
Two years full-time or two years part-time and one year full-time

### MMus/MPerf/MComp elective modules\*

- Advanced Principal Study
- Artistry in Stylistic / Composition (choice of Counterpoint, Fugue, Orchestration, Stylistic Composition)
- Body Matters
- Chamber Music
- Composition for Media
- Conducting
- Contextual Studies: The Forbidden Saxophone
- Creative Writing for Musicians
- Electronic Music Composition & Production
- Historical Performance
- Interpretation through Improvisation
- Introduction to Music Therapy
- Jazz Composition and Arranging (for Jazz students)
- Jazz Improvisation (for Jazz students)
- Music, Philosophy and the Arts
- Opera and Theatre (for singers)
- PianoWorks (for pianists)
- Research Project
- Social Arts Practices
- Song Accompaniment (for pianists)
- Vocal Repertoire (for singers)
- Voiceworks (for singers)

\*Elective modules are subject to change

For more information about principal studies, see pages 38–63.





For more information  
about principal studies,  
see pages 38–63.

---

## Advanced Artist Diploma

---

### Duration

Two years full-time

This Level 8 programme is for advanced music students with exceptional aptitude in their specialism, and strong professional and artistic ambitions. It provides specialist, professional training for students looking to pursue individual performance or creative projects as they embark on an international career.

Please note, this programme is undergoing periodic review and is expected to be revalidated at Level 8. Until approved, the Level 7 Artist Diploma will continue to be offered to select principal studies.

---

## MA in Opera Making & Writing

---

### Duration

One year full-time

*In association with the Royal Ballet and Opera*

This innovative programme supports composers and writers to develop new work in contemporary opera. Run in association with the Royal Ballet and Opera, it combines creative exploration with the technical and professional skills needed for the industry. At its core is the creation of a 25-minute chamber opera, developed collaboratively and brought to life in performance.

Please note, this programme is undergoing periodic review during the 2026/27 academic year and is therefore subject to change.

---

## MA in Music Therapy

---

### Duration

Two years full-time

Focussed on developing your musicianship and personal potential, this course will equip you with the knowledge and skills to work as a registered music therapist. Expand your musical skills and build your therapeutic and theoretical knowledge through an intensive programme of lectures, seminars, classes, clinical placements and individual instrumental or vocal lessons.

Please note, this programme is undergoing periodic review during the 2026/27 academic year and is therefore subject to change.

# Strings, Harp & Guitar

**The Strings, Harp and Guitar departments at Guildhall School offer an unmatched blend of world-class one-to-one tuition and immersive ensemble and chamber music training – designed to shape bold, versatile musicians ready to thrive in every corner of the profession.**

You'll train with a pre-eminent faculty of internationally renowned performers and professors, all dedicated to nurturing your individual artistry and pushing your potential to the highest level. An intense, inspiring, tailored experience that supports your artistic progression.



## Your training

As a Strings, Harp or Guitar student, you will:

- Receive an extensive principal study provision, benefiting from the departments' philosophy of rigorous and empowering training.
- Experience regular performance opportunities within world-class venues, including public and internal solo and chamber music platforms, concerts and competitions, and as part of Guildhall's many ensembles and productions.
- Benefit from intensive chamber music coaching and performance – central to the School's ethos of training for all students – forming ensembles both within your department and across disciplines.
- Take part in side-by-side sessions and performances with members of professional orchestras – recent collaborations include the London Symphony Orchestra and the Australian Chamber Orchestra.

## Visiting artists

Recent visits by internationally acclaimed artists for regular masterclasses and workshops include:

- **Strings:** Lorraine Campet, Bruno Giuranna, Roberto González-Monjas, Gary Hoffman, Janine Jansen, Patrick Jüdt, Leonidas Kavakos, Thomas Riebl, Andrés Keller, Patricia Kopatchinskaja, Rodrigo Moro, Joel Quarrington, Antoine Tamestit and Christian Tetzlaff.
- **Harp:** Anne-Sophie Bertrand, Sylvain Blassel, Sandrine Chatron, Anneleen Lenaerts, Masumi Nagasawa, Isabelle Perrin, Park Stickney and Gwyneth Wentink.
- **Guitar:** David Jaggs, Jonathan Leathwood, Manus Noble, Máximo Pujol, Marco Ramelli, Ignacio Rodes, Douglas Rogers, Berta Rojas, David Russell and Laura Snowden.

## Student and alumni successes

- Our students' recent competition 1st prizes and young artists awards have included the Bordeaux and Banff International String Quartet competitions, Trondheim International Chamber Music Competition, Borletti-Buitoni Trust Artists Award, Young Concert Artists Trust and Concert Artists Guild (New York), Royal Philharmonic Society Young Artist Award, Royal Over-Seas League and BBC New Generation Artists.
- Our alumni are members of leading chamber ensembles and orchestras internationally, and are among the most sought-after performers and teachers.

## Principal studies and courses

### Principal studies:

- Violin
- Viola
- Cello
- Double Bass
- Harp
- Guitar

### Undergraduate:

- BMus (Hons)

### Postgraduate:

- MMus
- MPerf
- MMus: Orchestral Artistry
- MPerf: Orchestral Artistry
- AdvArtDip<sup>†</sup>

### Postgraduate research:

- MPhil/DMus
- MPhil/PhD

<sup>†</sup> Subject to approval

# Wind, Brass & Percussion

**The Wind, Brass and Percussion department provides exciting opportunities for learning and performing. Through a supportive and dynamic environment, we focus on highly specialised skills, versatility and creativity, as well as your individual development, expertly guided by your professors.**

You'll develop a bespoke study pathway, according to your future career ambitions, gaining professional and teaching skills, learning how to develop a portfolio career and undertaking outreach work. By the end of your studies, you'll be ready to start a professional career as the best musician that you can be.



## Your training

As a Wind, Brass or Percussion student, you will:

- Receive up to 45 individual principal study lessons each year, from our world-class team of instrumental professors – all leaders in orchestral, solo and chamber performance.
- Perform with Guildhall's many ensembles, including Symphony and Opera orchestras, Contemporary Music, Jazz and Historical Performance ensembles, Symphonic Wind Orchestra, Saxophone Ensemble, Percussion Group and Recorder Consort.
- Join weekly departmental classes for your instrument and weekly orchestral repertoire classes, covering music from Mozart and Strauss to Shostakovich and musical theatre.
- Benefit from our unique chamber music programme, in which every student plays in their own chamber group and is guaranteed coaching from their own chamber music coach.
- Participate in regular performance platforms and the School's many annual instrumental competitions.
- Take advantage of opportunities for outreach work, collaborative projects and external engagements, as well as specialist classes in Performance Confidence and Resilience.

## Visiting artists

We regularly welcome visiting UK and international artists to give masterclasses on solo, chamber and orchestral repertoire classes, with recent guests including:

- **Wind:** Amy Yule, Juliette Bausor, Adam Walker, Philippe Tondre, Jonathan Kelly, Juliana Koch, Armand Djikoloum, Anthony McGill, Martin Fröst, Harri Mäki, Mariam Adam, Theo Plath, Fany Maselli, Fredrik Ekdahl, Julie Price, Claude Delangle, Valentine Michaud, Dorothee Oberlinger and Tabea Debus.
- **Brass:** Radek Baborák, Ben Goldscheider, Norberto López, Katy Woolley, Alison Balsom OBE, Philip Cobb, Tom Hooten, Yazz Ahmed, Toby Oft, Kris Garfitt, Helen Vollam, Perry Hoogendijk, Ross Knight and Stefan Tischler.
- **Percussion:** Robert van Sice, Matt Howard, Sola Akingbola, Delia Stevens and Victor Mendoza.

## Student and alumni successes

Our alumni hold top jobs (including many principal positions) with orchestras including the London Symphony, London Philharmonic, BBC Symphony, WDR Symphony, Vancouver Symphony, Scottish Chamber and Sofia Philharmonic orchestras; the orchestras of the Royal Opera House, Paris Opera and Welsh National Opera; and the BBC National Orchestra of Wales, Jyväskylä Sinfonia and Band of the Coldstream Guards.

## Principal studies and courses

### Principal studies:

- Flute
- Oboe
- Clarinet
- Bassoon
- Horn
- Trumpet
- Trombone
- Tuba
- Timpani and Percussion
- Saxophone
- Recorder

### Undergraduate:

- BMus (Hons)

### Postgraduate:

- MMus
- MPerf
- MMus: Orchestral Artistry
- MPerf: Orchestral Artistry
- AdvArtDip<sup>†</sup>

### Postgraduate research:

- MPhil/DMus
- MPhil/PhD

<sup>†</sup> Subject to approval

# Orchestral Artistry

**Orchestral Artistry is an exciting professional specialism within the MMus and MPerf programmes, created to bridge the gap between conservatoire and the profession. Designed for exceptional instrumentalists seeking a career in orchestral playing, the programme is delivered in close association with the world-leading London Symphony Orchestra (LSO), Resident Orchestra at the Barbican, and focuses on orchestral training and repertoire, education and outreach.**

Orchestral Artistry is highly distinctive and ground-breaking in scope, offering a unique opportunity to learn with some of the most respected orchestral musicians in the world.



## Your training

As an Orchestral Artistry student, you will:

- Work closely with LSO members to gain in-depth knowledge of orchestral repertoire, through regular coaching in orchestral sectionals, audition experience and instrumental classes, including side-by-side with the professionals.
- Receive individual tuition from Guildhall School's world-class professors, complementing your focus on performance and technique with studies in musicianship, leadership and communication.
- Perform in a variety of orchestral contexts, including symphonic concerts and fully staged productions with the School's acclaimed Opera Studies department.
- Attend LSO rehearsals, either observing or playing within the orchestra under the direction of internationally renowned conductors – such as LSO Chief Conductor Sir Antonio Pappano and Conductor Emeritus Sir Simon Rattle.
- Take part in masterclasses with LSO players, leading conductors and internationally acclaimed soloists.
- Experience the full range of LSO Discovery's education and community programmes, learning how community-based programmes are delivered, and working alongside LSO workshop leaders, performers and administration teams. You will also devise and deliver an LSO Discovery workshop for primary school children.
- Enhance your understanding of the orchestral profession at the highest level through Managing the Profession workshops, exploring various aspects of professional and personal development delivered by a range of LSO players, guest artists and speakers (including Orchestral Artistry alumni).

## Principal studies and courses

### Principal studies:

- Bowed Strings
- Harp
- Wind
- Brass
- Percussion

### Postgraduate:

- MMus: Orchestral Artistry
- MPerf: Orchestral Artistry



*In association with  
the London Symphony  
Orchestra*

# Keyboard

**Delivering a wide array of solo, ensemble and accompaniment training, our Keyboard department offers talented and passionate pianists the inspiring, challenging and caring environment needed to develop and thrive.**

With one-to-one lessons at the heart of your training and performance opportunities right from the first year, you will be given both the focussed support and freedom to develop as a performer, and find out who you really are as a musician.



## Your training

As a Keyboard student, you will:

- Receive 45 hours of intensive one-to-one tuition in your first two years as an undergraduate Piano student, rising to 60 hours in your third and fourth years, and as a postgraduate Piano student.
- Receive 30 hours of one-to-one tuition as a Collaborative Piano student, as well as close collaboration across Guildhall's vocal and instrumental departments, and a wealth of duo and ensemble performance opportunities.
- Have the opportunity to learn from many of the Keyboard department's staff in a variety of performance and group classes, and workshops, covering essential skills for the profession.
- Undertake all practical assessments through performances, as mid-year and end-of-year recitals or as concerts of ensemble work with instrumentalists and singers.
- Play a concerto with piano as a third-year undergraduate Piano student, and have the opportunity to work on chamber music, vocal accompaniment, contemporary repertoire and fortepiano with leading performers in these fields.
- Focus intensely on performance as a postgraduate student, with a broad range of opportunities within and outside the School, including our prestigious Gold Medal prize and the annual prize for a debut Wigmore Hall recital (for Piano students), and the Jubilee Piano Accompaniment Prize and the Paul Hamburger Prize (for Collaborative Piano students).

## Visiting artists

Recent guest artists include Paul Lewis, Imogen Cooper, Richard Goode, Stephen Hough, Jonathan Biss, Ilya Poletaev and Gabriel Kwok.

## Student and alumni successes

Our students' and alumni's recent successes include:

- Élisabeth Pion named Gold Laureate and Audience Choice Award winner at the Honens International Piano Competition.
- Elisabeth Tsai winning 1st prize at the International Brahms Piano Competition and 3rd prize at the Takamatsu International Piano Competition.
- Sebastian-Benedict Flore winning 1st prize at The Liszt Society International Piano Competition.
- Jong Sun Woo winning the Pianist's Prize at the Wigmore Hall Song Competition and 1st prize at the Hugo Wolf International Song Competition.
- David Palmer winning the Prix de mélodie, Prix de Lied (Special Jury Prize) and the prize for the best performance of the commissioned work at the Nadia and Lili Boulanger International Voice-Piano Competition.

## Principal studies and courses

### Principal studies:

- Piano
- Collaborative Piano\*

### Undergraduate:

- BMus (Hons)

### Postgraduate:

- MMus
- MPerf
- AdvArtDip†

### Postgraduate research:

- MPhil/DMus
- MPhil/PhD

\* Collaborative Piano study is Postgraduate only

† Subject to approval

# Vocal Studies

**Internationally renowned for training exceptional singers, our Vocal Studies programmes place your individuality as a performer at the centre of everything we do.**

Through an intensive programme of one-to-one voice lessons and coachings, drama and movement classes, language and repertoire classes, performance projects and masterclasses, you will gain the knowledge and practical experience necessary to forge your own artistic path.



## Your training

As a Vocal Studies student, you will:

- Establish the disciplines and foundations necessary for you as an undergraduate singer, including through one-to-one lessons and an array of acting, movement, repertoire, musicianship and language classes.
- Take on more performance opportunities as you progress, including staged opera projects, concerts and recitals, which have included performances and broadcasts from the Barbican with the London Symphony Orchestra and BBC Symphony Orchestra, Wigmore Hall and the Royal Ballet and Opera.
- Receive individual coaching and professional skills training, including teaching skills, to help you develop into a well-rounded artist.
- If you study at postgraduate level at Guildhall, you will hone your technical mastery and sharpen your professional focus, tailoring your training to your artistic goals while exploring opera, song, historical performance, and 20th-century and contemporary repertoire.

## Visiting artists

You will experience regular encounters with renowned visiting artists and industry figures, with recent highlights including:

- Masterclasses with Sumi Jo, Lawrence Brownlee, Dorothea Röschmann, Erin Morley, Joyce DiDonato, Renée Fleming, Gerald Finley CBE and Lise Davidsen, and alumni Anne Sofie von Otter, Roderick Williams OBE, Rebecca Evans CBE and Nicky Spence OBE.
- In Conversations with Sir Simon Keenlyside CBE, Stéphane Degout, Sue Spence (Askonas Holt), Hera Hyesang Park, Sam Snook (IMG), Davóne Tines and Maria Mott (MWA).

## Student and alumni successes (Vocal & Opera Studies)

- Our students' recent competition prizes include Operalia, BBC Cardiff Singer of the World, Tenor Viñas Competition, Nadia and Lili Boulanger International Voice-Piano Competition, Wigmore Hall/Bollinger International Song Competition, Kathleen Ferrier Awards, Queen Sonja International Music Competition, Lotte Lenya Competition, Gerda Lissner Competition, Kathleen Ferrier Society Bursary for Young Singers, International Vocal Competition 's-Hertogenbosch, BBC Radio 3 New Generation Artists Scheme, Eastbourne International Singing Competition, Royal Over-Seas League Annual Music Competition, London Handel Festival, Handel Singing Competition, Josep Mirabent I Magrans Singing and Chamber Music Contest, Oxford Lieder Young Artist Platform, Concurs Internacional de Cant Josep Palet and Clonter Opera Prize.

## Principal studies and courses

### Principal studies:

- Voice

### Undergraduate:

- BMus (Hons)

### Postgraduate:

- MMus
- MPerf
- AdvArtDip†

† Subject to approval

# Opera Studies

**Our Opera Studies specialism provides intensive postgraduate training for up to 24 singers and four student répétiteurs at any one time. We offer advanced vocal training for singers with an established vocal technique, vocal maturity and potential for further development.**

Operating at a professional level, we present a range of productions from opera scenes and chamber opera to full-scale operas over two years of study. Our répétiteur training is for highly accomplished pianists and sight-readers with knowledge of the operatic repertoire and experience of accompanying singers.



## Your training

As an Opera Studies vocal student, you will:

- Receive intensive vocal, dramatic and stagecraft coaching with leading industry professionals, from one-to-one singing lessons and role preparation, to acting, movement, dance and make-up.
- Support your training with dedicated language support and personalised career guidance to prepare you for life on and off stage.
- Have the opportunity to perform across all of our full public productions each year and our programmes of operatic excerpts in workshop settings, as well as in concerts and recitals.
- Collaborate on new work by composers and librettists on the School's exciting MA in Opera Making & Writing, delivered in association with the Royal Ballet and Opera.

As an Opera Studies répétiteur student, you will:

- Provide accompaniment for opera production rehearsals and coaching, and receive training in répétiteur techniques, piano lessons and language coaching, harpsichord tuition and continuo playing.

## Student and alumni successes (Vocal & Opera Studies)

- Our students' and alumni's recent young artist programmes include Berlin State Opera International Opera Studio, English National Opera Harewood Artists programme, Bavarian State Opera Studio, State Theatre Nuremberg International Opera Studio, Salzburg Festival Young Artists Programme, the Royal Ballet and Opera's Jette Parker Young Artists programme, Opéra de Montréal, Dutch National Opera and Zurich Opera.
- Our alumni have performed at all of the world's leading opera houses and music festivals, including the Royal Ballet and Opera, Metropolitan Opera, Teatro alla Scala, Bavarian State Opera, Vienna State Opera, Lyon National Opera, Opéra National de Paris, English National Opera, Garsington Opera, Grange Park Opera, Glyndebourne Festival Opera, Scottish Opera, Opera North, Welsh National Opera, Tanglewood Music Center, Deutsche Oper am Rhein, Marlboro Music Festival, European Concert Hall Organisation (ECHO) Rising Stars, Carnegie Hall SongStudio, Opera Holland Park, Longborough Festival Opera, Buxton International Festival, Solti Academy, Verbier Festival, Houston Grand Opera, Florida Grand Opera and Detroit Opera.

## Principal studies and courses

### Principal studies:

- Voice
- Répétiteur

### Postgraduate:

- MMus\*
- AdvArtDip†

\* MMus takes two years and is full-time only for Opera Studies

† Subject to approval

# Historical Performance

**Our Historical Performance department will encourage you to inhabit music from the past while exploring ways of communicating with a modern audience. As a continuo player, you'll develop your own artistry and technique, and gain a deeper appreciation of musicianship through collaborating with departments across the School.**

Through individual, ensemble and project-based learning, you'll gain the knowledge and experience necessary to embark on a varied career. Generous fee reductions and scholarships are available in acknowledgement of your collaborative support of fellow students.



## Your training

As an Historical Performance student, you will:

- Receive 35 hours of regular individual principal study lessons with award-winning professors, all of whom are principal players with ensembles from the UK and abroad.
- Perform side-by-side with your professors and members of the Academy of Ancient Music.
- Be a part of large-scale productions (including opera scenes and orchestra) within the School's world-class venues and perform chamber music at prestigious festivals and historic external venues.
- Participate in weekly continuo and vocal classes, developing your skills as a collaborative artist and your understanding of colleagues' repertoire and techniques.
- Have the space to consider the developing aesthetic of historical performance and its consequences for your professional development and future career paths.

## Student and alumni successes

Our students go on to perform with most of the major early music ensembles in the UK, using the skills and connections they have developed at Guildhall to build diverse career paths. Our students' and alumni's recent successes include:

- Ceruleo, founded at Guildhall, whose recent recording of 17th century music by Barbara Strozzi was included in *The Times*' 'Best classical albums of 2025 so far'.
- Apollo's Cabinet, also founded at Guildhall, whose "signature mix of acting, dancing, poetry and drama" has made them recent winners of the Royal Over-Seas League Mixed Ensemble prize, Festival Oude Muziek Utrecht Competition and the Göttingen International Händel Competition.
- Kristiina Watt, who has performed as a continuo player with the Academy of Ancient Music, The Marian Consort and the BBC Singers. Her trio, The Portrait Players, is supported by many emerging ensemble programmes, including Stoller Hall, Making Music, Live Music Now and BREMF Live!
- Sophia Prodanova, who was 3rd Prize winner of the International Bach Competition in Leipzig (2022).

## Principal studies and courses

### Principal studies:

- Historical keyboard and plucked continuo instruments

### Postgraduate:

- MMus
- MPerf
- AdvArtDip<sup>†</sup>

### Postgraduate research:

- MPhil/DMus
- MPhil/PhD (all voices and historical instruments considered for research degrees)

<sup>†</sup> Subject to approval

# Chamber Music

**Chamber music has a special place at Guildhall School as a core or elective element across many of our programmes of study, and you will be strongly encouraged to regularly engage in chamber music making.**

Through ensemble work, you'll build essential personal and professional skills, while deepening your understanding of music and discovering what drives your own artistic creativity.



## Your training

As an instrumental student, you will:

- Receive an unparalleled amount of chamber music coaching with our incredible team of chamber music staff.
- Be encouraged to take advantage of multiple chamber music performance opportunities, from regular performance platforms to radio broadcast, concerts and festival performances around the world.
- Have the opportunity to appear in our annual Chamber Music Festival, offering advanced students the chance to perform alongside Guildhall School professors in a celebration of music for small ensemble.
- Participate in chamber music competitions at the School, with prizes offering further external performance opportunities.

## Visiting artists

Coaching and masterclasses with visiting ensembles and individuals have most recently included the Danish String Quartet, Takács Quartet, Gould Piano Trio, Ralf Gothóni, Simon Rowland-Jones and former members of the Endellion Quartet.

## Student and alumni success

Our students' and alumni's recent prize wins include at the Bordeaux and Banff International String Quartet competitions, Trondheim International Chamber Music Competition, June Emerson Wind Music Launchpad Prize and Young Classical Artists Trust.

# Composition

**There is no 'house style' for composers at Guildhall. Instead, we're committed to helping you develop your own unique practice through our stimulating and creative training, as part of our diverse student community.**

Our guiding principle is that composers should develop in collaboration with technically proficient, sympathetic instrumentalists, under the expert guidance of experienced practitioners.



## Your training

As a Composition student, you will:

- Receive 30 hours of individual lessons a year from our outstanding faculty of professional composers, who are distinguished in a wide-ranging field of compositional activity, specialisms and artistic approaches.
- Workshop or publicly perform every piece you write at Guildhall, either with your fellow students or with professional, world-renowned visiting ensembles and soloists.
- Benefit from our longstanding external partnerships, including with the London Symphony Orchestra, Royal Ballet and Opera, London Contemporary Dance School, EXAUDI and Plus-Minus Ensemble.
- Follow two complementary strands of academic activity – Original Composition and Techniques – supporting your creative development and equipping you with a high level of skill and expertise in the craft and technique of musical composition.
- Further explore and refine your individual artistic approach while focusing on the collaborative nature of compositional practice. Your work will centre around multiple core projects, all of which are workshopped, rehearsed, publicly performed and recorded.

## Visiting artists

Our students regularly experience presentations and Q&As from acclaimed visiting composers, which have recently included John Adams, Anna Meredith, Michel van der Aa, Catherine Lamb, Steve Reich, Helmut Lachenmann, Neil Luck, Tristan Murail and Dame Judith Weir.

## Student and alumni successes

- Our recent alumni have had compositions commissioned for and performed by the Royal Ballet and Opera, BBC Proms, Aldeburgh Festival, Lucerne Festival, London Sinfonietta, Britten Sinfonia, Birmingham Contemporary Music Group, Manchester Collective, Opera North, and the London Symphony, Los Angeles Philharmonic, BBC Symphony, Philharmonia, London Contemporary, BBC Philharmonic, Royal Liverpool Philharmonic and BBC Scottish Symphony orchestras.
- Music by Guildhall composers is published by Boosey & Hawkes, Faber Music, Composers Edition and Éditions Durand, and our graduates have won prizes including Royal Philharmonic Society and British Composer awards.

## Principal studies and courses

### Principal studies:

- Composition

### Undergraduate:

- BMus (Hons)

### Postgraduate:

- MMus
- MComp
- MA Opera Writing & Making
- AdvArtDip<sup>†</sup>

### Postgraduate research:

- MPhil/DMus
- MPhil/PhD

<sup>†</sup> Subject to approval

# Opera Making & Writing

**Three composers and three writers are selected each year for the MA in Opera Making & Writing. Working in composer-writer pairs, students begin by developing a short opera scene, before moving on to a fully realised chamber opera.**

Alongside this core project, smaller assignments allow for independent creative development across a range of forms – from poetry and drama to instrumental, vocal or electronic compositions with a theatrical focus.



## Your training

As an Opera Making and Writing student, you will:

- Focus on the collaborative nature of opera making, with each composer-writer team supported by collaborative mentoring.
- Take part in one-to-one principal study lessons, production seminars and creative development workshops, with an elective module that allows for further specialisation.
- Join regular seminars with visiting professionals from the opera world, including composers, writers, singers, conductors and directors.
- Collaborate with Guildhall's renowned Opera Studies department, with students forming the cast for the chamber opera created by each composer-writer team.
- Experience Royal Ballet and Opera (RBO) rehearsals and performances, and engage with key RBO staff and visiting practitioners.

## Student and alumni successes

Graduates of the MA in Opera Making & Writing have received commissions from the Royal Ballet and Opera, National Opera Studio, Glyndebourne Festival Opera, Mahogany Opera Group, Birmingham Contemporary Music Group, Académie de Festival d-Aix-en-Provence, Danish National Opera, Casa da Música, Pittsburgh Festival Opera, Carnegie Hall, the Eden Project and many more.

## Principal studies and courses

### Principal studies:

- Composition
- Writing

### Postgraduate:

- MA Opera Making & Writing



*In association with the  
Royal Ballet and Opera*

# Electronic & Produced Music

**Electronic and Produced Music represents the fastest growth area in today's music industry, and suitably skilled musicians and producers enjoy a wealth of viable career opportunities.**

Our dedicated world-class teaching and real-world vocational approach prepare you for a rewarding career in this fast-paced, rapidly evolving industry.



## Your training

As an Electronic and Produced Music student, you will:

- Follow a focused principal study pathway as an undergraduate student, with weekly one-to-one lessons tailored to your creative and career goals while allowing flexibility to explore other disciplines.
- Tailor your studies as a postgraduate student, combining a variety of our principal study areas.
- Pursue opportunities for real-world collaboration, within Guildhall and beyond, working with departments across the School and our in-house commercial production unit, Guildhall Production Studio.
- Engage with external partners such as RAM Records, Musicity, MetFilm School, London Film Academy, Courtauld Gallery, National Gallery, National Theatre, BBC Symphony Orchestra, VOCES8 Centre (formerly Gresham Centre) and the National Trust.
- Receive opportunities to record your work with our fully professional alumni ensembles – Guildhall Session Orchestra and Guildhall Session Singers – both created to support commercial recording and production.
- Learn in dedicated studios designed specifically for Electronic and Produced Music students, including newly transformed studio and teaching facilities, which opened in 2025.

## Visiting artists

Our students experience regular masterclasses led by visiting professionals, with recent guests and collaborators including Harry Gregson-Williams, Steve Reich, Troy Miller, Imogen Heap, Rachel Portman, Corinne Bailey Rae, Raiser, Mad Professor (aka Neil Fraser), Wajid Yaseen, Tesfa, Tim Morrish, Stefanie Egedy, Rob Lane, Everything Everything, Joris de Man, Emptyset, Batool Desouky, Borislav Slavov, Dave Buckley, Isis O'Regan, Kidkanevil, Jocelyn Pook, Jahi Sundance, Tom Piper, Kevin Kerrigan, Leafcutter John, Rupert Collinson (AIR), Trevor Wishart, Robert Henke, Debbie Wiseman, Richard Tognetti, Kathinka Pasveer, Mica Levi, Matt Black (Coldcut) and David Wrench.

## Student and alumni successes

Our students' projects have included music for Corinne Bailey Rae, OrchestRAVE, OrchestRAM, BBC Radio, Channel 4, *Illuminated River* (London's largest public art commission), London Museum's immersive *Beasts of London* experience, the 125th anniversary of Tower Bridge, soundtracks/sonic installations for Waddesdon Manor, silent film projects with Barbican Film, and performances at Glastonbury Festival and the Barbican Centre.

## Principal studies and courses

### Principal studies:

- Electronic Music
- Film Music
- Game Audio
- Live Electronics
- New Media
- Popular Music Production
- Produced Music
- Songwriting
- Sonic Art

### Undergraduate:

- BMus (Hons)

### Postgraduate:

- MMus
- MComp
- AdvArtDip<sup>†</sup>

<sup>†</sup> Subject to approval

# Jazz

**Our Jazz department is made up of an inspirational team of professors who are uniquely placed to oversee your development as a creative jazz musician. Rooted in the rich traditions and origins of jazz, our teaching approach has evolved over four decades to reflect jazz as a constantly shifting, diverse and social art form.**

At Guildhall, you'll be empowered to fulfil your own creative ambitions, gaining the diversity of skills and experience needed to build a fulfilling career as a professional musician.



## Your training

As a Jazz student, you will:

- Follow a comprehensive programme of musicianship centred around improvisation, with one-to-one lessons, and weekly creative and collaborative combos with members of our world-class faculty.
- Deepen and broaden your skills and knowledge as an improvising musician through core classes in aural and transcription, harmony and repertoire, rhythm, keyboard skills, style and lineage, supported by classes to suit your individual interests and needs, such as composition, songwriting, keyboard skills and production techniques.
- Play with our award-winning Guildhall Jazz Orchestra and Guildhall Big Band in various School and student-led performance opportunities, including our annual jazz festival, produced in association with EFG London Jazz Festival.
- Gain real-world experience tracking in our recording studios, performing in small groups at top London jazz venues, such as the Vortex, and working on performance projects led by world-class domestic and international jazz artists.
- Be eligible to join one of our three vocal ensembles – Guildhall Jazz Singers, Guildhall Jazz Vocal Ensemble and Guildhall Jazz Choir – even if Jazz Voice isn't your principal study.

## Visiting artists

Our students experience a wide range of workshops, masterclasses and teaching residencies led by prominent UK and international artists, with recent visiting artists including Linda May Han Oh, Fred Hersch, Fabian Almazan, Johnathan Blake, Mark Turner, Sullivan Fortner, Nikki Iles, Mark Guiliana, Helen Sung, Billy Childs, Rufus Reid, Ola Onabule, Norma Winstone, Jim McNeely, Jovino Santos Neto, Theo Bleckmann and MOSS, Luciana Souza & Trio Corrente, and Trio Grande featuring Gilad Hekselman, Nate Wood and Will Vinson.

## Student and alumni successes

Our Jazz alumni include Edition Records artist Sultan Stevenson, MOBO Award-winning vocalist Zara McFarlane, artist-producer NAO, GRAMMY Award-winning saxophonist Tim Garland, pianist Jason Rebello, BBC Jazz Award-winning vocalist Stacey Kent and Parliamentary Award-winning saxophonist Josephine Davies.

## Principal studies and courses

### Principal studies:

- Bass
- Bowed Strings (Violin, Viola, Cello)
- Clarinet
- Composition & Arranging
- Drums
- Flute
- Guitar
- Percussion
- Piano
- Saxophone
- Trumpet
- Trombone
- Tuba
- Voice

### Undergraduate:

- BMus (Hons)

### Postgraduate:

- MMus
- MPerf
- MComp
- AdvArtDip<sup>†</sup>

### Postgraduate research:

- MPhil/DMus
- MPhil/PhD

<sup>†</sup> Subject to approval

# Music Therapy

**Led by Health and Care Professions Council (HCPC) registered Music Therapists and Guildhall School's world-class teaching staff, our MA in Music Therapy curriculum includes lectures, seminars and small-group classes, alongside extensive and varied clinical placements with qualified music therapists.**

One-to-one lessons in your principal and second instruments, and regular group sessions in musicianship and music therapy techniques, voice and improvisation, will help you acquire highly developed skills in therapeutic musical communication.



## Your training

As a Music Therapy student, you will:

- Gain clinical experience working with adults and children on multiple placements in a range of settings such as hospitals, schools and mental health services. Placements are central to the programme and start from the outset in term one. These involve working with people who experience mental health issues, learning disabilities, dementia and communication disorders, and are supported by weekly clinical seminars.
- Be introduced to research methods through the Applied Theoretical and Research Studies module, supporting your chosen research project.
- Undertake your own personal therapy during training, requiring a high degree of self-reflection and self-awareness (experience of personal psychotherapy prior to training is highly recommended).

## Student and alumni successes

Graduates of the MA in Music Therapy have an excellent record of employment in health, education, social and community services, and the voluntary sector. On successful completion of the programme, you'll be eligible to register as an arts therapist with the HCPC and as a professional member of the British Association for Music Therapy (BAMT).

## Principal studies and courses

### Principal studies:

- Music Therapy

### Postgraduate:

- MA Music Therapy

# Music alumni



*“A place of constant innovation, energy and open-mindedness. I was inspired by some of the most talented artists and teachers in the world.”*

**Alison Balsom OBE** Trumpet 2001

Soloist with leading orchestras and conductors worldwide who has recorded 16 albums with Warner Classics. A three-time Classic BRIT Award winner and three-time recipient of Germany’s Echo Klassik Award.

**Shabaka Hutchings**  
Clarinet 2007

Central figure within the London jazz scene who has played in a variety of groups, including Sons of Kemet, The Comet Is Coming, and Shabaka and the Ancestors. Released his third solo studio album *Of The Earth* in 2026 to positive reviews.



**Dinis Sousa**  
Piano 2019

Principal Conductor of the Royal Northern Sinfonia and Associate Conductor of the Monteverdi Choir and Orchestras. Founder and Artistic Director of Orquestra XXI, which brings together some of the best young Portuguese musicians.



**Francesca Chiejina**  
Vocal 2016

Graduate of The Royal Opera’s Jette Parker Young Artists Programme and winner of the 2023 UK Critics’ Circle Young Talent (Voice) Award. Recently appeared with English Touring Opera, Grange Park Opera and the Orchestre Symphonique de Montréal.



**Andrea Eklund**  
Historical Performance  
2017

Wrote, arranged and sang the title song to *Moomins and the Winter Wonderland*. Maintains an eclectic career, singing early music alongside Nordic folk, and composing music for film and choirs.



**Sa Chen**  
Piano 2001

An award-winning pianist who came to prominence in 1996 when she was selected for the final of the Leeds International Piano Competition aged only 16. She has performed with prestigious orchestras around the world and released eleven albums.



**Zara McFarlane**  
Jazz 2009

Winner of MOBO and Jazz FM awards, has released five acclaimed albums and featured on GRAMMY-nominated *Louie Vega Starring...XXVIII*. Performs with major orchestras, including the Royal Philharmonic, and sang at the 2024 FA Cup Final.



**Ema Nikolovska**  
Opera 2019

A BBC New Generation Artist from 2019–22 and recipient of the 2022 Borletti-Buitoni Trust Award. Member of the International Opera Studio of the Staatsoper Unter den Linden in Berlin from 2020–22, and recently a Featured Artist at Wigmore Hall.



**Roberto González-Monjas**  
Violin 2013

Chief Conductor of the Musikkollegium Winterthur and the Mozarteumorchester Salzburg, and Music Director of the Galicia Symphony Orchestra in Spain.



**Dave Arch**  
Piano 1984

Pianist, conductor, arranger and composer. Musical Director and arranger for BBC Television’s BAFTA-winning *Strictly Come Dancing* and the *Royal Variety Performance* on ITV. He was also music consultant for King Charles’ Coronation at Westminster Abbey.



# Production & Design

*“With world-class production and performance spaces, Guildhall School is globally recognised for pioneering some of the most dynamic and forward-thinking training in performance-making today. Learning here is hands-on, immersive and boldly collaborative – driven by the School’s ambitious, often trailblazing productions across theatre, opera and live events.”*

Hansjörg Schmidt BA (Hons) MSc FHEA  
Director of Production & Design

<b>Production &amp; Design at Guildhall</b>	68
<b>Undergraduate programmes</b>	72
<b>Postgraduate programme</b>	78
<b>Production &amp; Design alumni</b>	80



Scan for more details about studying production and design at Guildhall and to discover our department staff.  
[gsmd.ac.uk/production-and-design](https://gsmd.ac.uk/production-and-design)



# Production & Design at Guildhall

**Studying production and design with us means stepping straight into the world of live performance.**

You'll collaborate with professional directors, designers, media artists and conductors on a wide range of public productions – from acclaimed dramas and operas to screen and digital projects, original studio work, and large-scale outdoor events using projection mapping.

*“Every production teaches you more about the creative process and collaboration. When I now work on shows, I sincerely want to learn about others’ practice – it makes you a more well-rounded and empathetic maker.”*

**Josie Ireland**  
Production Arts 2024

Your studies will give you a deep, practical understanding of theatre craft and production management, preparing you to step confidently into the professional world.

You'll train in Guildhall's professional-standard theatres and rehearsal spaces, fully equipped with state-of-the-art technology that reflects current industry practice. You'll gain hands-on experience across major productions and smaller, innovative projects, working alongside a global community of actors and musicians. There are also exciting opportunities to work on live-streamed or recorded performances, equipping you with essential skills for today's fast-evolving creative landscape. Whether you're backstage or behind the camera, you'll be immersed in

every aspect of theatre-making and collaborative storytelling.

---

## **Collaborate across creative disciplines**

In Production & Design, we break down traditional boundaries and challenge convention, giving you the chance to work with students across other art forms.

As an undergraduate, you'll work with students on the Acting and Music programmes during the first-year cross-School project. You'll develop your own designs, installations and creative pieces throughout the year, culminating in an end-of-year festival that's a celebration of invention, collaboration and technical skill.

You'll also have the chance to join forces with Guildhall



*“It’s lovely to work in such a supportive environment where everyone knows everyone and there’s no fear of failure or making mistakes.”*

**Eli Hunt**

Production Arts 2025

Production Studio, the School’s award-winning production unit, working on forward-thinking digital projects that blend theatre, sound, film and immersive technology. Through Making It – Guildhall’s artist development programme – you can collaborate with students across the School to bring original ideas to life and gain experience in producing new, student-led work.

---

### **Create in world-class spaces**

Guildhall’s outstanding performance spaces rival those of any professional environment, giving you hands-on experience with the tools, spaces and technology shaping today’s creative industries.

All venues are fully equipped for advanced lighting, sound and video projection, offering high-spec environments that are both exciting and practical, and specifically designed to support your learning. Across our three contrasting theatre spaces, we have a fully automated flying system – one of the only theatre school systems of its kind in the world – as well as a full counterweight flying system and a tension wire grid.

Behind the scenes, you’ll access a full suite of specialist production spaces: from the scenic workshop, paint shop and props workshop to the costume workshop, dye room, design realisation studio, and sound and video editing suites. You’ll also train in the lighting and theatre technology lab and the stage electrics workshop, plus have access to the production and stage management offices,

where you’ll develop core skills in planning, coordination and collaboration.

Milton Court also houses rehearsal rooms, a TV studio with green screen and VR capability, teaching rooms and a media production suite with CAD-equipped computers. And with access to the School’s volumetric capture suite (located off-site with an industry partner), you’ll gain cutting-edge experience in emerging digital technologies.

---

### **Learn with our expert Production & Design staff**

Our teaching staff and technicians bring a wealth of experience from professional theatre and live events, offering students insights drawn directly from the industry. The department stays closely connected to current practice by working with a wide network of professionals, including freelance digital and media artists, costume supervisors, scenic artists, prop makers, production managers and lighting programmers. Strong links with former students and colleagues working across major UK and international theatre and opera companies ensure a constant exchange of ideas and opportunities. The Production & Design department also partners with Tonic, who deliver training in progressive cultural practices focused on diversity, equity, inclusion, resilience and shared responsibility.



## BA (Hons) in Performance Design

### Duration

Three years full-time

The BA in Performance Design programme gives you the creative and practical tools to design for live, hybrid and filmed performance. Studio-based training is combined with hands-on experience across a variety of performance projects, experimenting with our state-of-the-art facilities.

Throughout the course, you'll work on both speculative and fully realised projects, developing a strong personal design approach and a clear set of creative values. By the time you graduate, you'll be a confident collaborator with a growing professional network and an emerging industry presence.

As a Performance Design student, you will:

- Examine the creative, collaborative and practical elements of performance design, acquiring the practical skills and knowledge to take on different projects.
- Use our world-leading facilities to develop your performance design skills, beginning with studio-based projects and building to fully realised designs for public performance.
- Undertake a research project that reflects your individual interests, values and aspirations as an emerging artist.
- Explore the influence of the histories of art, design and theatre on your own identity as a performance designer.
- Make connections with established professional theatre practitioners, unions and societies that support professional practice.



### BA Production Arts pathways

- Costume
- Design Realisation
- Stage Management
- Theatre Technology

## BA (Hons) in Production Arts

### Duration

Three years full-time

This undergraduate programme equips you with the skills, experience and confidence to thrive in the creative industries – wherever your career takes you. Our graduates go on to work across theatre, music, live events, TV and film, from the Royal Ballet and Opera in London to Walt Disney Imagineering in Los Angeles and international tours with artists like U2 and Mitski.

Training is tailored to your individual career goals, with a flexible structure that supports both specialist and cross-disciplinary interests. You'll choose one of four pathways – Stage Management, Costume, Theatre Technology (including Sound, Lighting, Video and Automation) or Design Realisation (Scenic Art, Scenic Construction and Prop Making) – while having the freedom to explore elements from other areas. For example, if you want to learn about props and scenery construction but retain an interest in lighting, or gain experience in sound while focusing mainly on stage management, you can choose accordingly. The programme is flexible enough to allow for a wide range of interests or a more specialised approach.

Learning is highly vocational, delivered through studio-based exercises and production work on public performances. Alongside expert teaching, productions and technical support, the programme includes an industry placement and a self-led practical dissertation, giving you real-world experience and space to explore your creative voice.

Assessment reflects the nature of the work: it's continuous and practice-based, with a focus on skill development and creative outcomes rather than written exams.



For more information about BA Production Arts pathways see pages 74–77.

# Costume

**The Costume pathway at Guildhall offers students a dynamic, hands-on course that blends creativity with practical skills. Throughout the programme, you will develop a comprehensive understanding of costume for performance, covering design to realisation for stage and screen.**

As a Costume student, you will immerse yourself in the art and craft of costume-making, gaining expertise in construction and textile techniques. You will work with performers on productions, gaining the practical experience required for future work in the industry.



## Your training

As a Costume student, you will:

- Learn how to bring characters to life through costume by developing skills in research and design, pattern cutting, draping, sewing techniques, alterations, dyeing, breakdown, embellishment, sourcing, hiring and budgeting.
- Take part in a wide range of Guildhall productions, working closely with performers throughout the costume realisation process – including running wardrobe, dressing and supporting live performances.

## Student and alumni successes

- Our students have gained real-world experience through work placements on major professional productions, including *Sunset Boulevard*, *Hamilton*, *Matilda The Musical*, *Unfortunate*, & *Juliet*, *The Prince of Egypt* and *The Crown*, and with the Bridge Theatre, Shakespeare's Globe and English National Ballet.
- Our alumni have gone on to work on productions including *Wonka*, *The Crown*, *Newsies*, *Peter Pan Goes Wrong*, *Cabaret*, *Jersey Boys* and *Get Up, Stand Up! The Bob Marley Musical*, and with Shakespeare's Globe and Giffords Circus.

# Design Realisation

**On the Design Realisation pathway, you will play a key creative role in bringing productions to life. Training covers props, construction and scenic art, with the flexibility to keep your learning broad or focus on a specialist area as your skills develop.**

Learning takes place through an on-the-job training model in professional-standard workshops, offering an experience that closely mirrors real industry practice. By graduation, you'll be equipped with advanced technical and creative skills, ready to step into a wide range of roles across theatre, opera, live events, film and TV.



## Your training

As a Design Realisation student, you will:

- Build a solid grounding in all the key skills in scenic art, props and construction through formal teaching sessions in your first year.
- Consolidate and extend your design realisation skills through fun and challenging projects, and work across disciplines in collaborative creative work.
- Undertake key roles on Guildhall's drama and opera productions, as scenic artists, scenic carpenters and prop makers within small teams in your second year, followed by the opportunity to take on a leadership role in your third year.

## Student and alumni successes

- Our students have had rewarding and successful placements recently in scenic art at the Royal Ballet and Opera, and as prop makers in *The Lion King* workshops. Forthcoming placements include at industry-leading prop makers Tarver Productions, on *Star Wars*, and at the National Theatre in the paint shop.
- Our recent alumni destinations include Deputy Head of Stage at the Globe Theatre, prop painter on the sci-fi TV series *Silo*, freelance scenic artists at the Royal Ballet and Opera, trainee prop makers at the National Theatre, and for immersive theatre company Punchdrunk on its production of *The Burnt City*.

# Stage Management

**Stage Managers are at the heart of the collaborative process. They work closely with all production and creative teams and performers, from initial rehearsals to the final performance.**

Our aim is to prepare you for a successful and fulfilling career in the entertainment industry.

## Your training

As a Stage Management student, you will:

- Learn the full range of stage management roles and responsibilities, from prop sourcing and show calling to scheduling, score reading, and working with children and on touring productions.
- Work on the School's drama, opera and short film productions, collaborating closely with professional directors, designers, musical directors and conductors, and specialists in movement, intimacy and stage combat.
- Undertake training in event and music management, as well as key technologies like Photoshop and QLab.
- Develop essential teamwork and leadership skills, preparing you for the collaborative demands of a career in stage management.
- Explore how your skills translate to other areas, including events, television and film production.



- Gain behind-the-scenes insights during visits to major London theatres and opera houses, and the National Theatre's props store and archive.

## Student and alumni successes

- Our alumni find work at the Royal Ballet and Opera, Glyndebourne Festival Opera, English National Opera, National Theatre and on the West End, in part due to our excellent reputation and training in stage management.
- Our most recent alumni are working on *Starlight Express*, *Stranger Things: The First Shadow* and with the Royal Shakespeare Company, Donmar Warehouse and Punchdrunk theatre company.

# Theatre Technology

**Theatre Technology students engage in in-depth, hands-on training across lighting, sound, video and stage technology – including rigging, flying, automation and technical management.**

This pathway will support your progression from core technical and software knowledge to programming and show operation, leading to roles in production management or design. Whether specialising as a technician or designer in lighting, sound or video, your focus will be on developing both technical fluency and creative confidence through real-world production experience.

## Your training

As a Theatre Technology student, you will:

- Develop creative design skills in lighting, sound and video throughout the course.
- Gain practical experience, with involvement in Guildhall School's public productions each year, from fully staged dramas to large-scale operas.
- Specialise in a chosen area of Theatre Technology in your final year, honing the expertise needed for a successful career after graduation.
- Train in Guildhall's exceptional performance venues, with access to an extensive range of up-to-date theatrical equipment.



## Student and alumni successes

- Our students have undertaken work placements with leading professional theatres and companies, including *Harry Potter and the Cursed Child* and *The Prince of Egypt*, and with the National Theatre, Kiln Theatre, Glyndebourne Festival Opera, Cirque du Soleil and Autograph Sound.
- Our alumni have gone on to work with productions and organisations including *ABBA Voyage*, Bridge Theatre, Glyndebourne Festival Opera, Cadogan Hall, Pixelmappers and TAIT.

## MA in Collaborative Performance Making

### Duration

One year full-time

Our one-year Master's programme brings together early-career theatre-makers from a wide range of disciplines – including set, lighting, sound and video design, directing, dramaturgy, performing, and stage and production management – to collaboratively devise and develop new performance work as an ensemble.

This is a practice-led, laboratory-style course where collaboration is central, and the process is as valued as the outcome. The programme is made up of four modules and welcomes practitioners from an array of backgrounds who are interested in making performance work in a spirit of imaginative experimentation.

As a Collaborative Performance Making student, you will:

- Create four distinct events in a range of contexts and venues, building on your existing skill set and learning through hands-on experience.
- Make performance work in Guildhall School's own theatre spaces and work with external partners, including the Little Angel Theatre in London.
- Gain a deeper understanding of how you collaborate, what drives your practice, and where your creative and technical strengths lie.
- Complete an individual research project, develop a professional portfolio and be matched with a mentor from Guildhall's network of experienced industry professionals.

Graduates from the programme go on to careers across the creative industries – in set, lighting and video design, stage and technical management, directing, producing, teaching and research – with many continuing to develop their own work as artists and collaborators.



# Production & Design alumni



*“I was bowled over by how ahead of the times the technology and facilities were at Guildhall. A leading educational establishment.”*

**Prema Mehta** 2004

Lighting designer for theatre working on over 200 productions, including at the Walt Disney Concert Hall and Royal Opera House, and the founder of the collaborative network Stage Sight.

**Jessica Case**

Design Realisation 2019

Worked as a Scenic Artist at the Royal Ballet and Opera and the National Theatre. More recently has worked in film as Action Props on *FI*, Action Props Assistant on *Masters of the Universe* and Assistant Props Buyer on *Pressure*.



**Simon Baker**

1992

Won the Olivier Award for Best Sound Design for *Matilda The Musical* and the Tony Award for Best Sound Design in a Play for *A Christmas Carol*. Has worked at the Royal Shakespeare Company and National Theatre, and is Creative Director for *Wise Children*.



**EJ Fosuhene**

Stage Management 2025

Worked as Assistant Stage Manager on *Othello* at Theatre Royal Haymarket and MOVE IT Dance Show at Excel Centre, and in stage management for *The Lion*, *The Witch* and *The Wardrobe* at Sadler’s Wells.



**Jordan Lindsay**

Theatre Technology 2019

Currently working as Deputy Head of Automation on *The Phantom of the Opera*, following roles in the West End as an Automation Operator on *Harry Potter and the Cursed Child* and as Automation & SFX No 2 on *Back to the Future: The Musical*.



**Oliver Hynds**

Theatre Technology 2024

Works as Design Assistant for lighting and show design company Pixelmappers. Previous work includes lighting and production design roles on world tours for Deftones and Dua Lipa, including Dua Lipa’s Glastonbury 2024 performance.



**Katie Jenkinson**

Costume 2014

Worked at Marvel Studios, Los Angeles on feature films and series, including *Captain America: Civil War*, *Guardians of the Galaxy Vol.2*, *Thor: Ragnarok*, *Captain Marvel* and *The Falcon and the Winter Soldier*.



**Julia Whittle**

1989

Showcaller for the opening and closing ceremonies at the 2012 London Olympic Games, has worked as a showcaller on large-scale concerts and tours, including Adele, Take That, Spice Girls and Coldplay.



**Tim Lutkin**

Technical Theatre 2008

Won the Olivier Award for Best Lighting Design for *Chimerica*, and a second Olivier and the Tony Award for Best Lighting Design in a Play for *Life of Pi*. A Creative Director for Walt Disney Imagineering, including for 2025’s *Disney Tales of Magic*.



**Kash Bennett**

1990

Served as Managing Director of National Theatre Productions for ten years, overseeing NT work outside of the Southbank, including *The Lehman Trilogy* and *Angels in America* on Broadway. Joined Sonia Friedman Productions as Executive Director in 2025.

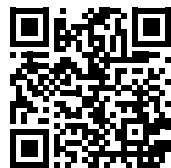


# Research & Teaching

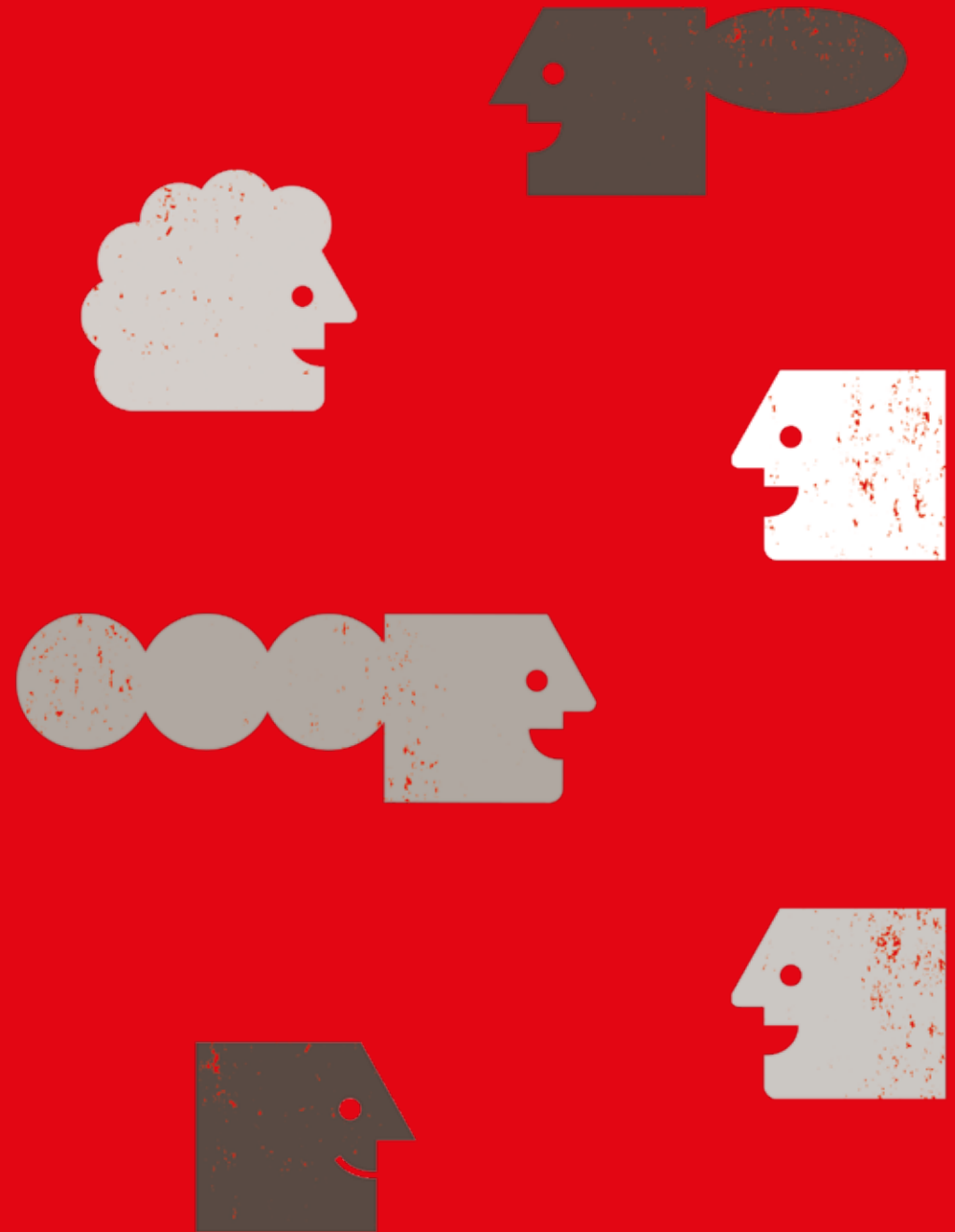
*“At Guildhall School, research is a rigorous and inquisitive pursuit that interrogates fundamental questions about the performing arts. Our work bridges critical enquiry and creative practice, shaped by the distinctive context of a world-class conservatoire. In the most recent Research Excellence Framework (REF 2021), 100% of our research impact was recognised as world-leading – the highest rating of any UK music conservatoire – affirming the significance and reach of our research across music and drama.”*

Professor Andy Lavender BA (Hons) PhD  
Provost & Vice-Principal (Academic)

<b>Postgraduate Research</b>	84
<b>PGCert in Performance Teaching</b>	85



Scan for more details about research and teaching at Guildhall.  
[gsmd.ac.uk/postgraduate-study](https://gsmd.ac.uk/postgraduate-study)



## Funding support

Researchers in any discipline can apply for partial fee bursaries, awarded on the basis of need or merit, or to support research in priority areas.

*ADAPT-AI: Analysing and Diversifying Audience Participation with Creative Technologies & AI* is one of just ten new AHRC-funded Doctoral Focal Awards in the UK, and offers fully-stipendiary scholarships. Run by a consortium of three distinctive London institutions, Guildhall School of Music & Drama, King's College London and London South Bank University – in partnership with world-leading cultural venues and industry partners, including Serpentine Arts Technologies, Southbank Centre, Barbican Immersive, Target3D and more – it combines research expertise in the creative industries, digital humanities, media production and performance practice.

Previous prestigious studentships with high-profile arts and research institutions have included the Barbican-Guildhall Studentship and the Royal Opera House Doctoral Composer-in-Residence.

## MPhil/DMus/PhD

### Duration

Three years full-time (plus up to one year 'writing up') or six years part-time (plus up to one year 'writing up')  
*Validated by City St George's, University of London*

Our Postgraduate Research programme reflects the multidisciplinary nature of Guildhall School, with researchers in a range of disciplines coming together to find inspiration in the sharing of work and approaches to research. Research covers a broad spectrum of topics across music, theatre, production arts, and related artistic and pedagogic practices – including composition, instrumental and historical performance, vocal and opera studies, theatre-making, performing arts education, institutional cultures and socially engaged practice. Many projects take an interdisciplinary approach, with a shared focus on examining the role and impact of the performing arts practitioner in contemporary society.

As a postgraduate researcher, you will:

- Join our community of more than 70 postgraduate researchers and around 75 research-active staff and associates, with opportunities to engage with others through our regular ResearchWorks seminar series and the Guildhall De-Centre for Socially Engaged Practice and Research.
- Be supported by a team of supervisors selected for their academic and artistic expertise. Regular meetings will provide opportunities for offering critical feedback, helping to shape your methodology and prepare you for submission and examination.
- Receive up to 120 hours of research training each year through a weekly seminar programme that covers key study skills and methodologies, supports the development of professional skills such as academic publishing and conference presentation, and offers opportunities to share your work and learn from guest researchers.



*“The programme has helped me distil my core values as an educator and develop my unique teaching style, while helping me build my confidence.”*

**Claire Saramanti**

Performance Teaching 2025

## PGCert in Performance Teaching

### Duration

One year part-time  
*A distance learning programme delivered online*

Our PGCert in Performance Teaching is designed for professional musicians, actors, production artists and dancers who incorporate teaching into their practice – whether as a primary focus or part of a broader portfolio career.

The programme welcomes participants from a wide range of contexts, including schools, higher education, junior conservatoires, and community or lifelong learning settings. Delivered entirely online, it brings together creative practice and educational theory through innovative, evidence-informed approaches to teaching.

As a Performance Teaching student, you will:

- Build upon your existing expertise and experience, with course content combining a strong focus on critically reflective practice with the teaching of practical skills and knowledge.
- Participate in 12 days of online workshops combined with shorter webinars, and support from a one-to-one tutor, learning from an experienced team of educators, performers and researchers, and receiving robust feedback on your practical work.
- Join a collaborative community of artist-educators, exchanging ideas across disciplines and embracing different learning styles in a supportive and dynamic environment.

Graduates of the PGCert have advanced in their current roles, expanded into new areas of teaching or progressed to further study – including doctoral research and Guildhall Ignite's executive coaching programme.



# Contact us

## Drama

+44 (0)20 7382 2323  
drama@gsmd.ac.uk

## Accommodation

+44 (0)20 7382 6132  
accommodation@gsmd.ac.uk

## Music

+44 (0)20 7382 6128  
music@gsmd.ac.uk

## Applications

+44 (0)20 7382 7181  
registry@gsmd.ac.uk

## Production & Design

+44 (0)20 7382 2323  
productionarts@gsmd.ac.uk

## Finance

+44 (0)20 7382 7208  
finance@gsmd.ac.uk

## Research

+44 (0)20 7628 2571 ext. 5104  
doctorate@gsmd.ac.uk

## Student Services

+44 (0)20 7382 7219  
student.services@gsmd.ac.uk

### Illustrations

Artwork © The Project Twins

### Inside cover

Government Inspector © David Monteith-Hodge

### Inside back cover

© Paul Cochrane

### Photography credits

Luke Bryant, Paul Cochrane, David Monteith-Hodge, Steve Gregson, Monika S. Jakubowska, Alice Underwood, Christopher Suckling, Simon Way, Lidia Crisafulli.

### Acting alumni photos

Maisie Norma Seaton © Stewart Bywater  
Sheyi Cole © Pip Bourdillon  
Damian Lewis © Kent Smith/SHOWTIME  
Anya Chalotra © Rachel Smith  
Lily James © Laurie Sparham  
Toheeb Jimoh © Faye Thomas  
Paapa Essiedu Manuel Harlan © RSC  
Nikesh Patel © Nathan Johnson  
Bella Maclean © Phil Sharp  
Michaela Coel © Sophie Mutevelian/  
BBC/Netflix

### Music alumni photos

Alison Balsom © Parlophone records  
Ltd – Simon Fowler  
Shabaka Hutchings © Pierrick Paid  
Dinis Sousa © Sim Canetty-Clarke  
Francesca Chiejina © Charles Chiejina  
Andrea Eklund © Linus Lindholm  
Ema Nikolovska © Kaupo Kikkas  
Roberto González-Monjas © Marco  
Borggreve  
Dave Arch © BBC/Guy Levy

### Production Arts alumni photos

Prema Mehta © Joseph Lynn  
Simon Baker © Steve Tanner  
EJ Fosuhene © David Buttle  
Jordan Lindsay © Maxim Gamble  
Oliver Hynds © David Buttle  
Katie Jenkinson © Reams Photo  
Kash Bennett © Cameron Slater

### Disclaimer

This Prospectus was published in May 2026 and is intended to provide general information only concerning Guildhall School of Music & Drama.

Full and up-to-date details for all programmes and services are available at the School's website [gsmd.ac.uk](https://www.gsmd.ac.uk)

© Guildhall School of Music & Drama 2026/2027

# Pave your way to Guildhall School

Looking for ways to build on your music, drama and production arts skills and get a taste of the Guildhall School experience?

We have options for you.

## Join Guildhall Young Artists

Guildhall Young Artists provides inspiring performing and production arts training for children and young people up to the age of 18.

Learn music from scratch or take your skills to the next level, express yourself in our drama classes or learn backstage skills with our production arts offer. You can even study from home with our unique online centre.

[gsmd.ac.uk/guildhall-young-artists](https://www.gsmd.ac.uk/guildhall-young-artists)

## Take the next step with Short Courses

Have fun, upskill and achieve in ways you never thought you could. We have short courses and summer schools for all ages and levels across music, drama, production arts, writing and more.

Our courses take place across the School's campus in central London, which includes state-of-the-art venue Milton Court and our iconic Silk Street building.

[gsmd.ac.uk/summer-schools](https://www.gsmd.ac.uk/summer-schools)



# Find us

## Guildhall School of Music & Drama

Silk Street, Barbican  
London EC2Y 8DT  
+44 (0)20 7628 2571  
[gsmd.ac.uk](http://gsmd.ac.uk)

## By underground/train

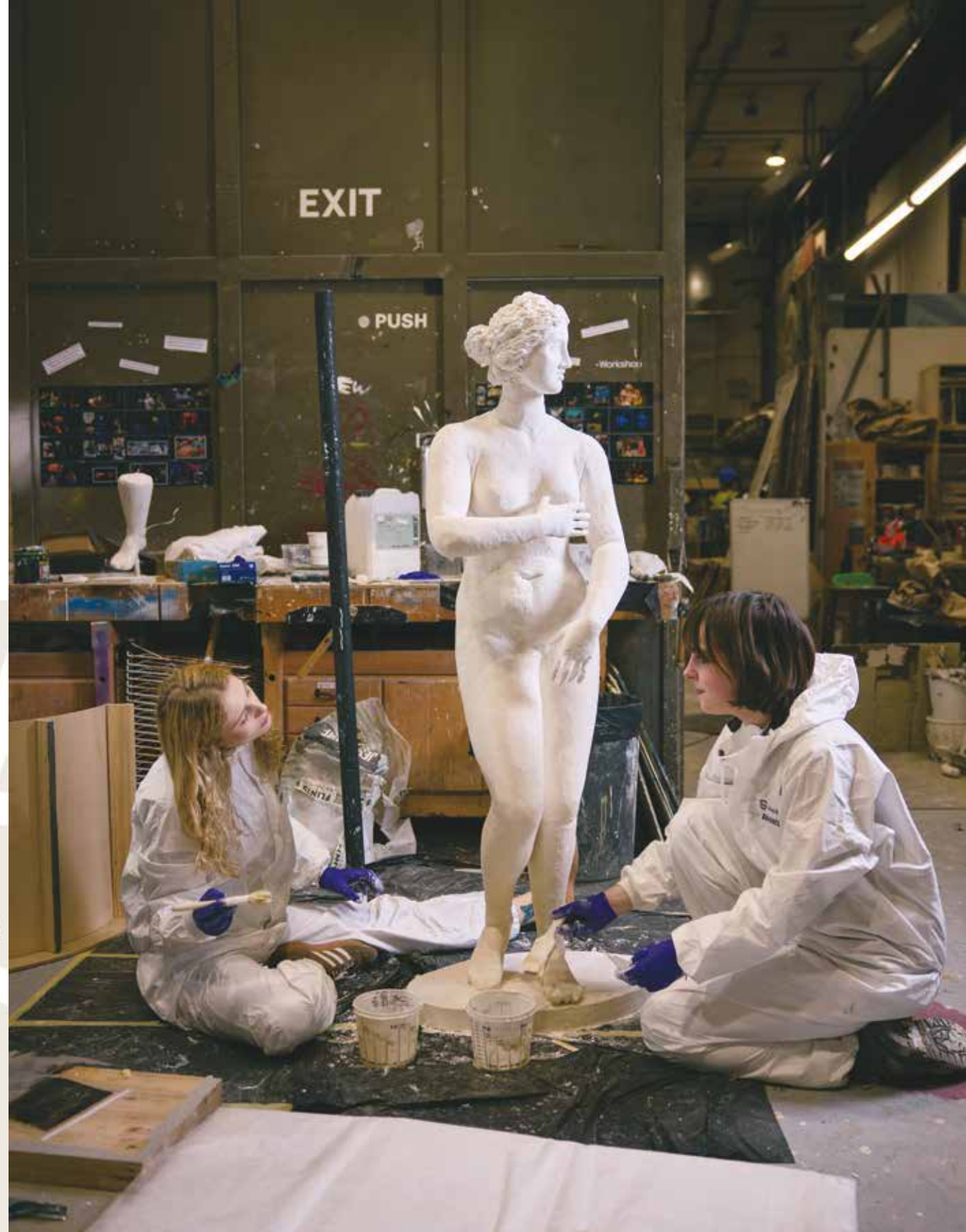
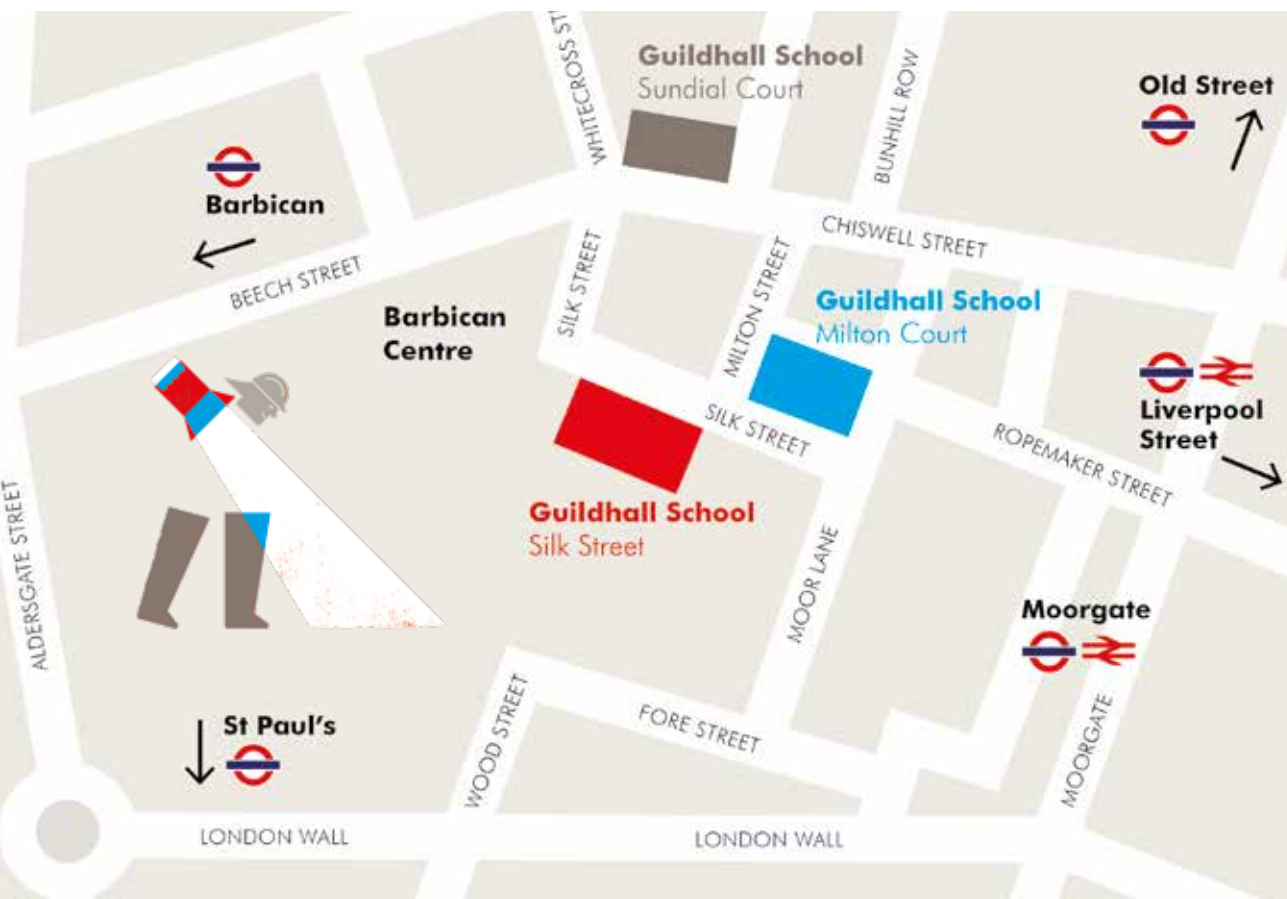
Barbican, Moorgate, Liverpool Street, St Paul's and Old Street stations are all nearby.

## By bus

Bus numbers 4, 43, 55, 76, 100 and 153 stop nearby.

## By road

The School falls within the Congestion Charge zone. Visit [cclondon.com](http://cclondon.com) or telephone 0845 900 1234 for further information.



Guildhall School delivers world-class professional training in music, drama, production and design, across our iconic, state-of-the-art facilities in the heart of the City of London.

Our courses:

---

### **Undergraduate**

- **BA (Hons) Acting**
- **BMus (Hons)**
- **BA (Hons) Performance Design**
- **BA (Hons) Production Arts**
  - Costume
  - Design Realisation
  - Stage Management
  - Theatre Technology

---

### **Postgraduate**

- **MMus/MPerf**
- **MMus/MComp**
- **Advanced Artist Diploma**
- **MA Opera Making & Writing**
- **MA Music Therapy**
- **MA Collaborative Performance Making**
- **MPhil/DMus/PhD**
- **PGCert Performance Teaching**



Guildhall School is provided by the City of London Corporation.